



Australian
Bureau of
Statistics

May 1996

Labour Force

Queensland



Statistics ■



EMBARGOED UNTIL 11:30 A.M. 9 JULY 1996

**LABOUR FORCE, QUEENSLAND
MAY 1996**

**Brian Doyle
Acting Deputy Commonwealth Statistician**

AUSTRALIAN BUREAU OF STATISTICS

CATALOGUE NO. 6201.3

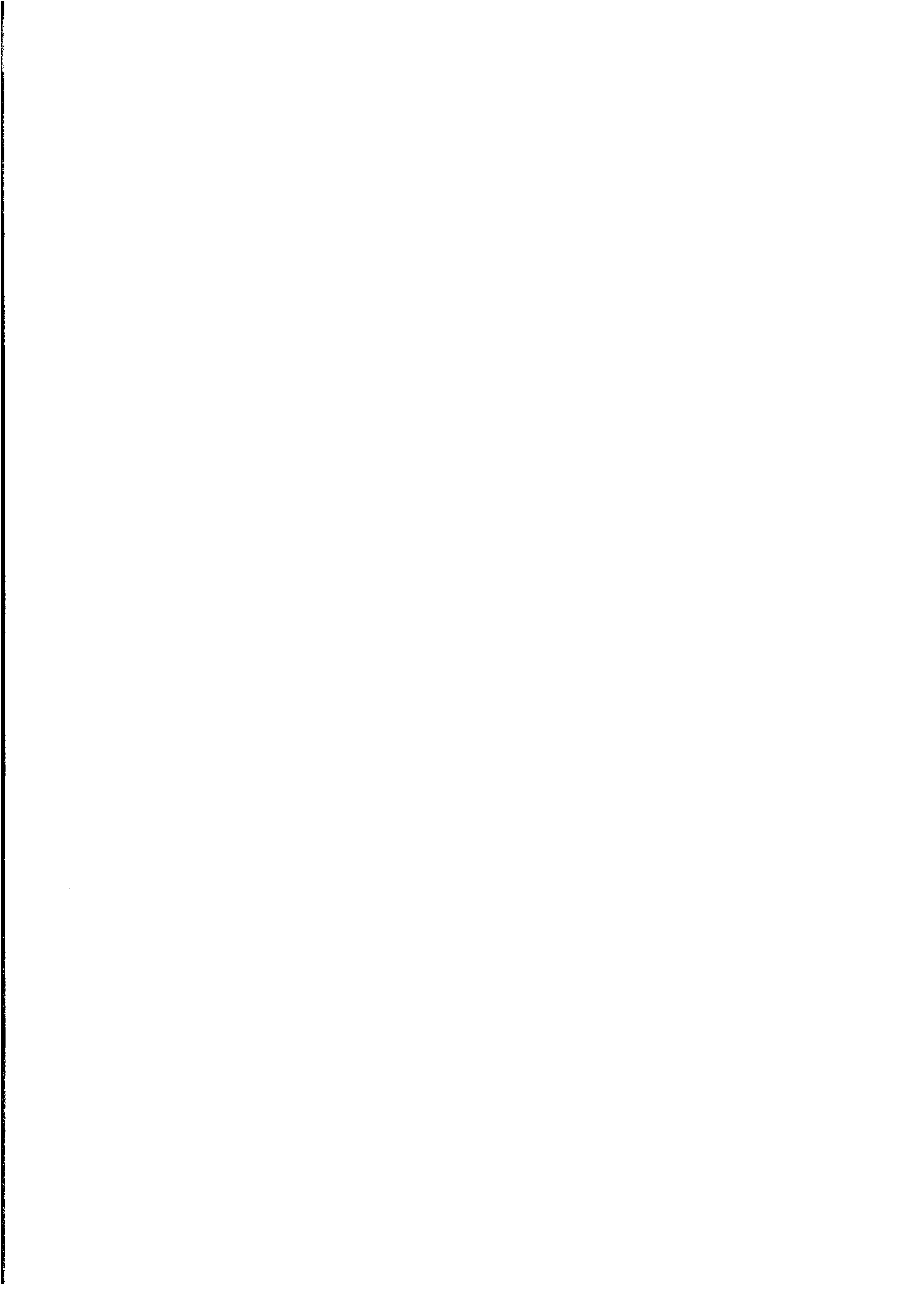
© Commonwealth of Australia 1996

Printed by the Australian Government Publishing Service

CONTENTS

Table	Page
1 Labour force, trend series, Queensland, May 1995 to May 1996	1
2 Employment and unemployment change for selected groups, Queensland, May 1995 and May 1996	2
Labour force status of the civilian population aged 15 years and over, Queensland	
3 Original series, March 1995 to May 1996	4
4 Seasonally adjusted series, March 1995 to May 1996	5
5 Trend series, March 1995 to May 1996	6
6 Statistical regions, March 1996	8
7 Statistical regions, April 1996	9
8 Statistical regions, May 1996	10
9 Age by major statistical region, May 1996	11
10 Persons aged 15 to 19 years by full-time attendance at an educational institution, May 1996	12
11 Persons aged 20 to 24 years by full-time attendance at a tertiary institution, May 1996	12
Employed persons, Queensland	
12 Full-time or part-time status, March 1995 to May 1996	13
13 Average hours worked by status in employment, industry division and occupation group, May 1996	14
14 Status in employment, industry division and occupation group, May 1996	15
15 Industry division by occupation group, May 1996	15
Unemployed persons, Queensland	
16 Duration of unemployment, Brisbane Major Statistical Region, March 1995 to May 1996	16
17 Duration of unemployment, Balance of Queensland, March 1995 to May 1996	17
18 Duration of unemployment, Queensland, March 1995 to May 1996	18
19 Unemployed persons and unemployment rates: Industry division and occupation group of last full-time job, Queensland, May 1995 to May 1996	19
.. Special surveys data relating to the labour force	20
.. Maps showing statistical regions of Queensland and Brisbane Major Statistical Region	21
.. Explanatory Notes	24
.. Technical Notes	29
.. Glossary	33

-
- INQUIRIES:
- *for further information about statistics in this publication and the availability of related unpublished statistics*, contact the Inquiry Service on Brisbane (07) 3222 6351 (fax (07) 3222 6283) or any ABS State office.
 - *for information about other ABS statistics and services*, please refer to the back page of this publication.
-



SUMMARY OF FINDINGS

TREND SERIES

In Queensland, employment increased in trend terms by 13 000 to 1 523 900 between May 1995 and May 1996 while the number of unemployed persons increased by 6 400 to 152 200 over the same period. The unemployment rate rose from 8.8% in May 1995 to 9.6% in October 1995, but then fell to 9.1% in May 1996. The participation rate decreased from 65.3% in May 1995 to 64.3% in May 1996. In Australia, employment increased by 70 500 from May 1995 to May 1996 and the number of unemployed persons increased by 27 500 over the same period.

TABLE 1 — LABOUR FORCE, QUEENSLAND, TREND SERIES

Particulars	Unit	May 1995	February 1996	March 1996	April 1996	May 1996	Annual percentage change
Employed	'000	1 510.9	1 520.8	1 522.1	1 523.5	1 523.9	+ 0.9
Unemployed	'000	145.8	154.9	153.4	152.4	152.2	+ 4.4
Labour Force	'000	1 656.8	1 675.8	1 675.6	1 675.9	1 676.1	+ 1.2
Unemployment rate	%	8.8	9.2	9.2	9.1	9.1	..
Participation rate	%	65.3	64.7	64.6	64.4	64.3	..

DIAGRAM 1 - EMPLOYED PERSONS: MONTHLY PERCENTAGE CHANGE (Trend series)

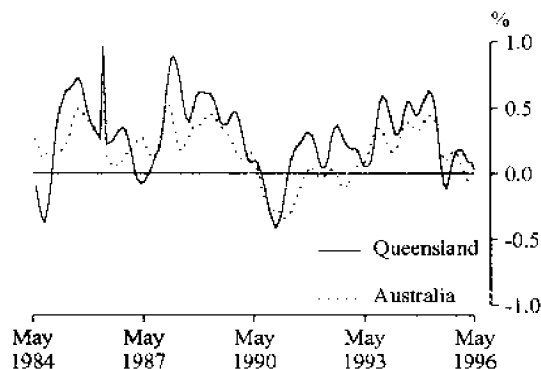
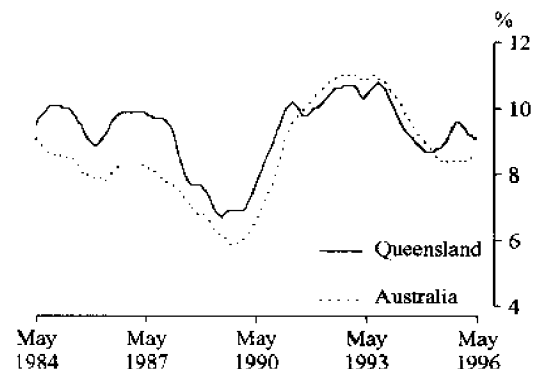


DIAGRAM 2 - UNEMPLOYMENT RATE (Trend series)



SEASONALLY ADJUSTED SERIES

In seasonally adjusted terms, employment in Queensland increased by 27 100 to 1 531 700 between May 1995 and May 1996 while the number of unemployed persons increased marginally to 152 400 over the same period. The unemployment rate fluctuated from May 1995 (9.1%) to a low of 8.7% in July 1995 and a high of 10.1% in October 1995. The unemployment rate was 9.0% in May 1996. Between May 1995 and May 1996, the unemployment rate fell below 9.0% in only three of the months.

ORIGINAL SERIES

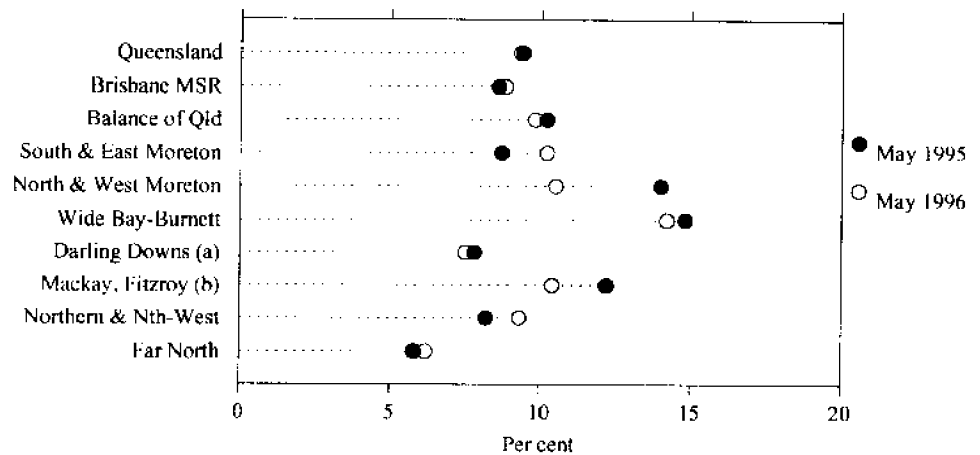
In original terms, the number of employed persons in Queensland in May 1996 was 1 524 200 and the number of unemployed persons was 156 700. The median duration of unemployment was 18 weeks both in May 1995 and May 1996.

Regional estimates

The unemployment rate for the Brisbane Major Statistical Region (MSR) in May 1996 was 8.8% and for the Balance of Queensland was 9.8%. North and West Brisbane Statistical Division (BSD) Balance had the highest unemployment rate (11.1%) in the Brisbane MSR while the Brisbane City Outer Ring had the lowest rate (6.9%).

For the Balance of Queensland, regions with the highest unemployment rates were Wide Bay-Burnett (14.2%) and North and West Moreton (10.5%). The Far North Statistical Region had the lowest unemployment rate of 6.2%, while the Darling Downs and South-West Statistical Region had the second lowest unemployment rate of 7.5%.

DIAGRAM 3 - UNEMPLOYMENT RATE: REGIONS OF QUEENSLAND, MAY 1995 AND MAY 1996



(a) Including South-West. (b) Including Central-West.

YOUTH ESTIMATES

The number of 15 to 19 year olds in the Queensland labour force decreased by 3 000 to 153 900 persons over the year from May 1995 to May 1996, while the number employed increased marginally to 119 100 persons. The unemployment rate for this group decreased from 24.5% in May 1995 to 22.6% in May 1996 and the participation rate fell from 65.1% in May 1995 to 63.1% in May 1996.

There were 194 200 employed 20 to 24 year olds in May 1996, a decrease of 3 400 over the previous 12 months. The participation rate of this age group decreased from 85.3% in May 1995 to 82.5% in May 1996 while the unemployment rate decreased from 13.6% to 12.2% over the same period.

TABLE 2 — EMPLOYMENT AND UNEMPLOYMENT CHANGE FOR SELECTED GROUPS, QUEENSLAND

Particulars	Employed persons			Unemployed persons		
	May 1995 '000	May 1996 '000	Annual change %	May 1995 '000	May 1996 '000	Annual change %
Males	848.3	878.0	3.5	94.5	88.4	-6.5
Females	649.3	646.2	-0.5	61.2	68.4	11.8
Persons aged (years)						
15-19	118.5	119.1	0.5	38.4	34.8	-9.4
20-24	197.6	194.2	-1.7	31.1	27.0	-13.2
25-44	743.5	757.2	1.8	61.5	66.7	8.5
45 and over	438.0	453.8	3.6	24.7	28.2	14.2
Full-time workers	1 129.7	1 148.6	1.7
Part-time workers	368.0	375.6	2.1
Looking for full-time work	125.3	124.2	-0.9
Looking for part-time work	30.4	32.5	6.9
Queensland	1 497.6	1 524.2	1.8	155.7	156.7	0.6

EARLY RELEASE OF MONTHLY REGIONAL LABOUR FORCE DATA

Labour Force data for Queensland regions are available each month as an annual subscription service.

By subscribing to this service you will receive regional labour force data soon after the release of *The Labour Force, Australia, Preliminary* (6202.0).

Information will be provided on the number of persons employed, unemployed, persons in the labour force, persons not in the labour force, the unemployment rate, the participation rate and youth unemployment for the 11 statistical regions in Queensland.

If you are interested in subscribing to this service please complete the order form below and mail to:

***Client Support Section, ABS, GPO Box 9817,
Brisbane Q 4001
(Telephone: 07 3222 6231)***

✂ -----

I wish to receive by mail or fax Regional Labour Force data each month at an annual subscription of \$240 or \$25 for a single month.

Name: _____ Position: _____

Organisation: _____ Telephone: _____

Fax No: _____

Address: _____

Enclosed is my cheque/money order for \$
(made payable to : CPM, Australian Bureau of Statistics)

OR

Debit my credit card: Bankcard Mastercard Visa Amex for \$ _____

Card number: _____ Expiry date: _____

Name on card: _____

Signature: _____ Date: _____

TABLE 3 -- LABOUR FORCE STATUS: ORIGINAL SERIES, QUEENSLAND

Month	Employed		Unemployed		Labour force	Not in labour force	Civilian population aged 15 years and over	Unemployment rate	Participation rate
	Full-time	Total	Looking for full-time work	Total					
	'000	'000	'000	'000					
MALES									
1995									
March	756.6	851.8	77.5	88.3	940.1	310.3	1,250.4	9.4	75.2
April	763.7	856.9	75.3	86.9	943.8	309.7	1,253.5	9.2	75.3
May	755.7	848.3	80.7	94.5	942.8	313.7	1,256.6	10.0	75.0
June	765.6	860.8	73.3	85.2	945.9	313.7	1,259.6	9.0	75.1
July	766.2	860.2	71.9	85.3	945.5	317.2	1,262.7	9.0	74.9
August	760.6	857.5	73.2	83.8	941.3	324.4	1,265.7	8.9	74.4
September	769.0	870.5	79.0	90.8	961.3	307.4	1,268.7	9.4	75.8
October	759.9	858.5	83.9	92.9	951.4	320.1	1,271.5	9.8	74.8
November	765.9	862.5	82.0	91.7	954.2	320.0	1,274.2	9.6	74.9
December	781.8	876.3	84.9	94.5	970.8	306.2	1,276.9	9.7	76.0
1996									
January	770.5	856.0	96.4	107.2	963.3	316.6	1,279.8	11.1	75.3
February	780.9	871.7	85.7	93.3	965.0	317.7	1,282.7	9.7	75.2
March	774.7	872.0	81.5	94.9	966.9	318.7	1,285.6	9.8	75.2
April	778.6	876.2	82.1	92.9	969.1	319.8	1,288.8	9.6	75.2
May	779.3	878.0	79.5	88.4	966.3	325.8	1,292.1	9.1	74.8
FEMALES									
1995 —									
March	361.1	645.6	46.8	70.9	716.5	557.6	1,274.1	9.9	56.2
April	374.9	656.9	40.7	58.8	715.7	561.2	1,276.9	8.2	56.1
May	374.0	649.3	44.6	61.2	710.5	569.3	1,279.8	8.6	55.5
June	383.0	657.6	42.0	59.7	717.3	565.4	1,282.7	8.3	55.9
July	380.1	657.0	38.8	54.3	711.4	574.2	1,285.6	7.6	55.3
August	369.4	642.8	41.9	58.2	700.9	587.6	1,288.5	8.3	54.4
September	381.0	656.2	42.1	59.1	715.3	576.2	1,291.5	8.3	55.4
October	375.7	647.8	37.8	56.5	704.3	590.1	1,294.5	8.0	54.4
November	376.1	659.7	41.7	59.5	719.2	578.2	1,297.4	8.3	55.4
December	377.1	667.3	41.3	61.2	728.5	572.0	1,300.4	8.4	56.0
1996 —									
January	381.3	635.8	48.3	64.3	700.1	603.3	1,303.3	9.2	53.7
February	374.6	642.2	50.9	72.2	714.5	591.8	1,306.2	10.1	54.7
March	367.7	642.2	48.5	68.0	710.2	599.0	1,309.2	9.6	54.2
April	362.4	639.0	48.8	69.8	708.8	603.3	1,312.2	9.8	54.0
May	369.3	646.2	44.7	68.4	714.6	600.6	1,315.2	9.6	54.3
PERSONS									
1995 —									
March	1,117.6	1,497.4	124.3	159.2	1,656.6	867.9	2,524.5	9.6	65.6
April	1,138.6	1,513.7	116.0	145.8	1,659.5	870.9	2,530.4	8.8	65.6
May	1,129.7	1,497.6	125.3	155.7	1,653.3	883.0	2,536.4	9.4	65.2
June	1,148.6	1,518.4	115.3	144.9	1,663.3	879.1	2,542.3	8.7	65.4
July	1,146.3	1,517.2	110.7	139.7	1,656.9	891.4	2,548.3	8.4	65.0
August	1,130.0	1,500.3	115.1	141.9	1,642.2	912.0	2,554.2	8.6	64.3
September	1,150.0	1,526.8	121.1	149.9	1,676.7	883.6	2,560.2	8.9	65.5
October	1,135.7	1,506.3	121.7	149.4	1,655.7	910.2	2,565.9	9.0	64.5
November	1,142.1	1,522.1	123.8	151.3	1,673.4	898.2	2,571.6	9.0	65.1
December	1,158.9	1,543.6	126.1	155.7	1,699.2	878.1	2,577.4	9.2	65.9
1996 —									
January	1,151.9	1,491.8	144.7	171.5	1,663.3	919.8	2,583.2	10.3	64.4
February	1,155.5	1,513.9	136.6	165.5	1,679.4	909.5	2,588.9	9.9	64.9
March	1,142.3	1,514.1	130.0	163.0	1,677.1	917.7	2,594.8	9.7	64.6
April	1,141.0	1,515.2	130.9	162.7	1,677.9	923.1	2,601.0	9.7	64.5
May	1,148.6	1,524.2	124.2	156.7	1,680.9	926.3	2,607.3	9.3	64.5

TABLE 4 — LABOUR FORCE STATUS: SEASONALLY ADJUSTED SERIES, QUEENSLAND

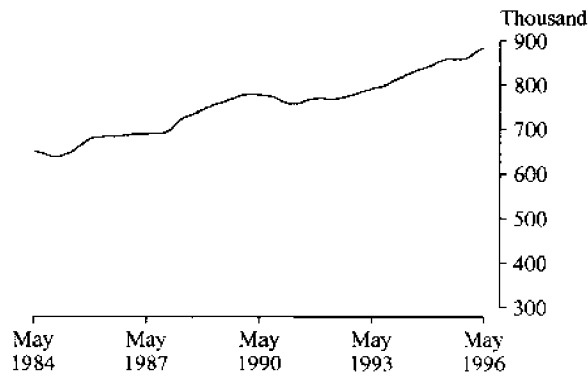
Month	Employed	Unemployed	Labour force	Unemployment rate	Participation rate
	'000	'000	'000	%	%
MALES					
1995 —					
March	853.7	83.1	936.8	8.9	74.9
April	863.8	82.5	946.4	8.7	75.5
May	856.6	88.1	944.7	9.3	75.2
June	857.3	86.3	943.7	9.2	74.9
July	857.4	88.8	946.2	9.4	74.9
August	861.0	90.1	951.1	9.5	75.1
September	862.3	96.0	958.3	10.0	75.5
October	850.6	104.5	955.2	10.9	75.1
November	862.7	98.0	960.7	10.2	75.4
December	864.8	97.0	961.8	10.1	75.3
1996 —					
January	864.6	97.9	962.5	10.2	75.2
February	876.1	85.3	961.4	8.9	74.9
March	873.9	89.4	963.2	9.3	74.9
April	883.5	88.2	971.7	9.1	75.4
May	886.5	82.3	968.8	8.5	75.0
FEMALES					
1995 —					
March	643.6	63.0	706.6	8.9	55.5
April	653.8	58.8	712.6	8.3	55.8
May	648.1	62.7	710.8	8.8	55.5
June	655.6	61.3	716.9	8.5	55.9
July	658.1	55.2	713.3	7.7	55.5
August	648.9	61.1	710.0	8.6	55.1
September	646.6	60.0	706.6	8.5	54.7
October	646.4	62.8	709.2	8.9	54.8
November	654.0	63.4	717.4	8.8	55.3
December	658.6	61.2	719.8	8.5	55.4
1996 —					
January	656.1	63.6	719.7	8.8	55.2
February	648.2	62.7	711.0	8.8	54.4
March	640.0	60.4	700.4	8.6	53.5
April	636.0	70.0	705.9	9.9	53.8
May	645.2	70.1	715.3	9.8	54.4
PERSONS					
1995 —					
March	1,497.3	146.1	1,643.4	8.9	65.1
April	1,517.6	141.4	1,659.0	8.5	65.6
May	1,504.6	150.8	1,655.4	9.1	65.3
June	1,513.0	147.6	1,660.6	8.9	65.3
July	1,515.6	144.0	1,659.6	8.7	65.1
August	1,510.0	151.2	1,661.1	9.1	65.0
September	1,508.9	156.0	1,664.9	9.4	65.0
October	1,497.0	167.3	1,664.4	10.1	64.9
November	1,516.7	161.3	1,678.0	9.6	65.3
December	1,523.4	158.1	1,681.6	9.4	65.2
1996 —					
January	1,520.7	161.5	1,682.2	9.6	65.1
February	1,524.4	148.0	1,672.3	8.8	64.6
March	1,513.9	149.8	1,663.7	9.0	64.1
April	1,519.4	158.2	1,677.7	9.4	64.5
May	1,531.7	152.4	1,684.1	9.0	64.6

TABLE 5—LABOUR FORCE STATUS: TREND SERIES, QUEENSLAND

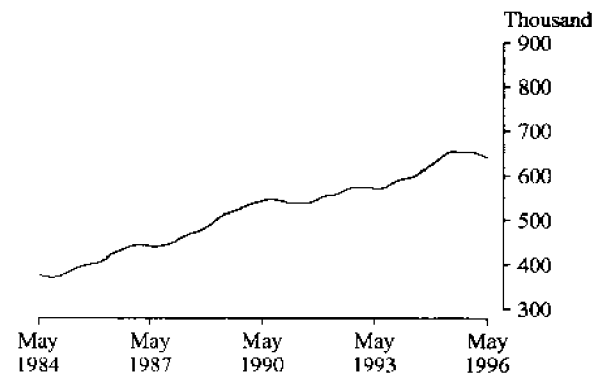
Month	Employed	Unemployed	Labour force	Unemployment rate	Participation rate
	'000	'000	'000	%	%
MALES					
<i>1995</i>					
March	854.5	82.5	937.0	8.8	74.9
April	857.0	83.7	940.8	8.9	75.1
May	858.6	85.3	943.9	9.0	75.1
June	859.1	87.5	946.5	9.2	75.1
July	858.8	90.1	948.9	9.5	75.2
August	858.3	93.3	951.6	9.8	75.2
September	858.2	96.3	954.5	10.1	75.2
October	859.0	98.2	957.2	10.3	75.3
November	860.8	98.6	959.4	10.3	75.3
December	863.7	97.2	960.9	10.1	75.3
<i>1996</i> —					
January	867.8	94.5	962.3	9.8	75.2
February	872.5	91.3	963.8	9.5	75.1
March	877.0	88.5	965.5	9.2	75.1
April	881.3	86.1	967.3	8.9	75.1
May	884.3	84.4	968.6	8.7	75.0
FEMALES					
<i>1995</i> —					
March	643.9	60.6	704.5	8.6	55.3
April	649.1	60.8	709.9	8.6	55.6
May	652.3	60.5	712.8	8.5	55.7
June	653.3	60.0	713.3	8.4	55.6
July	652.5	59.8	712.2	8.4	55.4
August	651.4	60.0	711.4	8.4	55.2
September	651.2	60.7	711.8	8.5	55.1
October	651.8	61.4	713.2	8.6	55.1
November	652.6	61.9	714.5	8.7	55.1
December	652.5	62.3	714.8	8.7	55.0
<i>1996</i> —					
January	651.1	62.7	713.9	8.8	54.8
February	648.4	63.6	712.0	8.9	54.5
March	645.1	64.9	710.0	9.1	54.2
April	642.2	66.3	708.6	9.4	54.0
May	639.6	67.9	707.5	9.6	53.8
PERSONS					
<i>1995</i> —					
March	1,498.4	143.1	1,641.5	8.7	65.0
April	1,506.1	144.5	1,650.6	8.8	65.2
May	1,510.9	145.8	1,656.8	8.8	65.3
June	1,512.3	147.5	1,659.8	8.9	65.3
July	1,511.3	149.9	1,661.2	9.0	65.2
August	1,509.7	153.3	1,662.9	9.2	65.1
September	1,509.4	157.0	1,666.3	9.4	65.1
October	1,510.8	159.6	1,670.4	9.6	65.1
November	1,513.4	160.5	1,673.9	9.6	65.1
December	1,516.2	159.5	1,675.7	9.5	65.0
<i>1996</i> —					
January	1,518.9	157.2	1,676.1	9.4	64.9
February	1,520.8	154.9	1,675.8	9.2	64.7
March	1,522.1	153.4	1,675.6	9.2	64.6
April	1,523.5	152.4	1,675.9	9.1	64.4
May	1,523.9	152.2	1,676.1	9.1	64.3

**DIAGRAM 4 – LABOUR FORCE STATUS: TREND SERIES, QUEENSLAND,
MAY 1984 TO MAY 1996**

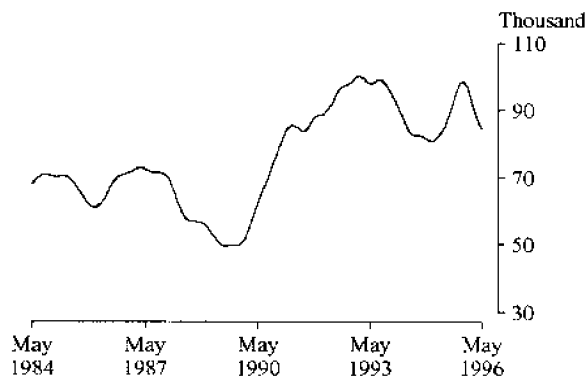
EMPLOYED MALES



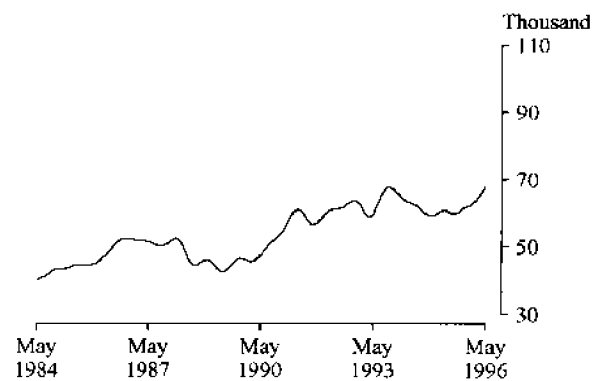
EMPLOYED FEMALES



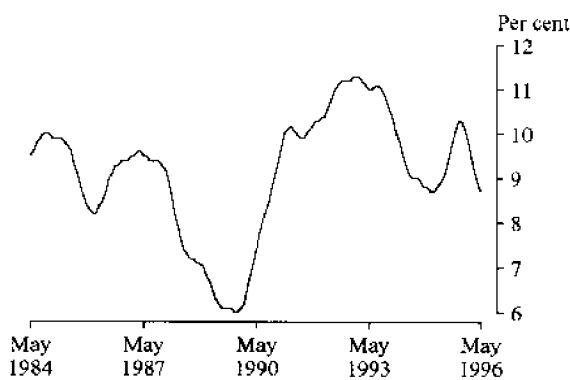
UNEMPLOYED MALES



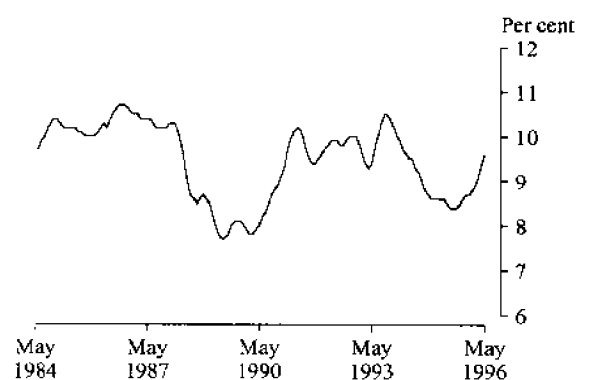
UNEMPLOYED FEMALES



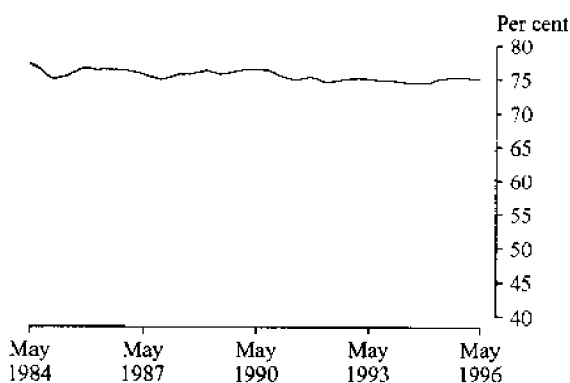
MALE UNEMPLOYMENT RATE



FEMALE UNEMPLOYMENT RATE



MALE PARTICIPATION RATE



FEMALE PARTICIPATION RATE

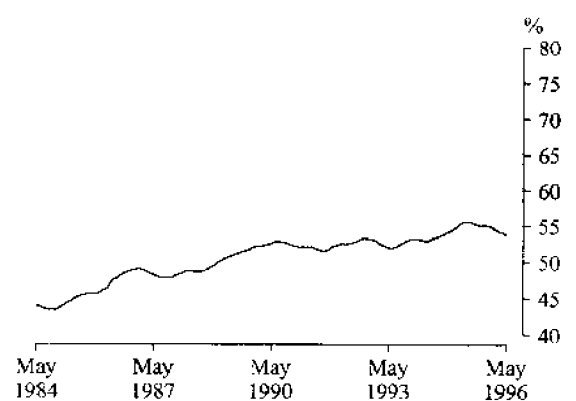


TABLE 6—LABOUR FORCE STATUS: STATISTICAL REGIONS, QUEENSLAND, MARCH 1996

Region	Employed			Unemployed	Labour force	Unemployment rate	Participation rate
	Full-time	Part-time	Total				
	'000	'000	'000	'000	'000	%	%
MALES							
<i>Brisbane</i>	362.1	41.5	403.6	44.2	447.8	9.9	76.8
Brisbane City Inner Ring	83.2	13.2	96.4	9.8	106.2	9.3	74.4
Brisbane City Outer Ring	104.8	11.5	116.3	11.5	127.8	9.0	75.3
South and East BSD Balance	72.9	7.0	79.9	7.8	87.7	8.9	81.0
North and West BSD Balance	101.2	9.8	111.0	15.0	126.0	11.9	77.8
<i>Balance of Queensland</i>	412.6	55.8	468.4	50.7	519.1	9.8	73.9
South and East Moreton	74.8	16.8	91.6	9.2	100.8	9.1	72.5
North and West Moreton	48.0	9.5	57.5	6.8	64.3	10.6	67.7
Wide Bay-Burnett	49.2	6.8	56.0	12.3	68.3	18.0	70.8
Darling Downs and South-West	58.7	6.8	65.5	4.2	69.7	6.1	76.2
Mackay, Fitzroy and Central-West	80.7	5.3	86.0	7.0	93.0	7.6	75.9
Northern and North-West	51.9	4.9	56.7	6.7	63.5	10.6	77.2
Far North	49.3	5.7	55.0	4.5	59.4	7.5	78.5
Queensland	774.7	97.3	872.0	94.9	966.9	9.8	75.2
FEMALES							
<i>Brisbane</i>	187.0	129.6	316.6	27.5	344.1	8.0	56.7
Brisbane City Inner Ring	53.1	27.0	80.1	4.9	84.9	5.8	56.3
Brisbane City Outer Ring	60.4	43.5	103.9	6.8	110.7	6.1	57.8
South and East BSD Balance	30.5	23.9	54.4	5.3	59.6	8.8	57.2
North and West BSD Balance	43.0	35.3	78.3	10.6	88.9	11.9	55.3
<i>Balance of Queensland</i>	180.6	144.9	325.5	40.5	366.1	11.1	52.1
South and East Moreton	39.9	32.6	72.5	5.2	77.7	6.7	54.8
North and West Moreton	23.3	21.5	44.8	4.8	49.7	9.8	46.0
Wide Bay-Burnett	18.7	16.2	34.9	6.9	41.8	16.4	46.4
Darling Downs and South-West	22.9	16.5	39.4	3.0	42.4	7.2	47.9
Mackay, Fitzroy and Central-West	29.0	24.5	53.5	9.4	62.9	15.0	53.3
Northern and North-West	20.7	16.5	37.1	6.0	43.1	13.9	54.3
Far North	26.2	17.1	43.3	5.2	48.5	10.7	63.7
Queensland	367.7	274.5	642.2	68.0	710.2	9.6	54.2
PERSONS							
<i>Brisbane</i>	549.1	171.1	720.3	71.7	791.9	9.0	66.5
Brisbane City Inner Ring	136.2	40.2	176.4	14.7	191.2	7.7	65.1
Brisbane City Outer Ring	165.2	55.0	220.3	18.3	238.5	7.7	66.0
South and East BSD Balance	103.4	30.9	134.3	13.1	147.3	8.9	69.4
North and West BSD Balance	144.2	45.1	189.3	25.6	214.9	11.9	66.6
<i>Balance of Queensland</i>	593.2	200.7	793.9	91.3	885.2	10.3	63.0
South and East Moreton	114.8	49.4	164.1	14.4	178.5	8.0	63.5
North and West Moreton	71.3	31.1	102.4	11.7	114.0	10.2	56.2
Wide Bay-Burnett	67.9	23.1	90.9	19.2	110.1	17.4	59.0
Darling Downs and South-West	81.6	23.2	104.9	7.3	112.1	6.5	62.3
Mackay, Fitzroy and Central-West	109.7	29.8	139.5	16.5	155.9	10.6	64.8
Northern and North-West	72.5	21.3	93.9	12.7	106.6	11.9	65.9
Far North	75.4	22.8	98.3	9.7	107.9	9.0	71.1
Queensland	1,142.3	371.8	1,514.1	163.0	1,677.1	9.7	64.6

TABLE 7 — LABOUR FORCE STATUS: STATISTICAL REGIONS, QUEENSLAND, APRIL 1996

Region	Employed			Unemployed	Labour force	Unemployment rate	Participation rate
	Full-time	Part-time	Total				
	'000	'000	'000	'000	'000	%	%
MALES							
<i>Brisbane</i>	361.0	41.2	402.2	42.9	445.0	9.6	76.2
Brisbane City Inner Ring	84.1	12.8	96.9	9.4	106.3	8.9	73.1
Brisbane City Outer Ring	106.1	13.4	119.5	11.7	131.2	8.9	74.9
South and East BSD Balance	73.3	4.4	77.7	7.2	84.9	8.5	79.7
North and West BSD Balance	97.5	10.6	108.1	14.6	122.7	11.9	78.1
<i>Balance of Queensland</i>	417.6	56.5	474.0	50.0	524.0	9.5	74.4
South and East Moreton	75.0	13.3	88.3	10.0	98.3	10.1	72.0
North and West Moreton	49.3	11.4	60.6	8.5	69.1	12.2	69.9
Wide Bay-Burnett	51.7	7.4	59.1	10.4	69.5	15.0	70.6
Darling Downs and South-West	55.9	7.0	62.9	4.4	67.3	6.6	77.7
Mackay, Fitzroy and Central-West	75.3	7.1	82.4	6.9	89.3	7.7	76.0
Northern and North-West	51.8	4.4	56.2	6.1	62.3	9.8	75.1
Far North	58.5	5.9	64.4	3.7	68.1	5.5	81.5
Queensland	778.6	97.6	876.2	92.9	969.1	9.6	75.2
FEMALES							
<i>Brisbane</i>	183.1	129.8	312.9	30.8	343.7	9.0	56.5
Brisbane City Inner Ring	47.3	30.3	77.6	5.5	83.1	6.6	56.0
Brisbane City Outer Ring	63.0	43.2	106.2	8.8	115.0	7.7	59.3
South and East BSD Balance	33.0	21.7	54.8	6.8	61.6	11.0	58.8
North and West BSD Balance	39.7	34.6	74.3	9.7	84.0	11.5	52.1
<i>Balance of Queensland</i>	179.3	146.8	326.1	39.0	365.1	10.7	51.9
South and East Moreton	40.6	32.1	72.7	5.4	78.1	6.9	56.1
North and West Moreton	21.6	23.0	44.5	6.0	50.5	11.8	46.4
Wide Bay-Burnett	20.7	16.5	37.2	6.8	44.0	15.4	46.4
Darling Downs and South-West	22.8	16.5	39.3	* 2.8	42.1	* 6.7	47.3
Mackay, Fitzroy and Central-West	24.8	24.6	49.5	9.3	58.8	15.8	51.3
Northern and North-West	22.5	14.3	36.8	4.6	41.4	11.1	51.9
Far North	26.2	19.8	46.1	4.2	50.2	8.3	64.6
Queensland	362.4	276.6	639.0	69.8	708.8	9.8	54.0
PERSONS							
<i>Brisbane</i>	544.1	170.9	715.1	73.7	788.8	9.3	66.2
Brisbane City Inner Ring	131.4	43.1	174.5	14.9	189.4	7.9	64.5
Brisbane City Outer Ring	169.1	56.6	225.7	20.5	246.2	8.3	66.7
South and East BSD Balance	106.3	26.2	132.5	14.0	146.5	9.5	69.3
North and West BSD Balance	137.3	45.1	182.4	24.3	206.7	11.7	64.9
<i>Balance of Queensland</i>	596.9	203.3	800.1	89.0	889.1	10.0	63.1
South and East Moreton	115.6	45.4	161.0	15.3	176.4	8.7	64.0
North and West Moreton	70.8	34.3	105.2	14.4	119.6	12.1	57.6
Wide Bay-Burnett	72.4	23.9	96.3	17.2	113.6	15.2	58.7
Darling Downs and South-West	78.7	23.4	102.2	7.3	109.4	6.6	62.3
Mackay, Fitzroy and Central-West	100.2	31.7	131.9	16.2	148.1	10.9	63.8
Northern and North-West	74.3	18.7	93.0	10.7	103.7	10.3	63.7
Far North	84.8	25.7	110.5	7.9	118.4	6.7	73.3
Queensland	1,141.0	374.2	1,515.2	162.7	1,677.9	9.7	64.5

TABLE 8 — LABOUR FORCE STATUS: STATISTICAL REGIONS, QUEENSLAND, MAY 1996

Region	Employed			Unemployed	Labour force	Unemployment rate	Participation rate
	Full-time	Part-time	Total				
	'000	'000	'000	'000	'000	%	%
MALES							
<i>Brisbane</i>	359.9	44.6	404.5	38.8	443.3	8.8	75.7
Brisbane City Inner Ring	83.4	13.9	97.3	8.5	105.8	8.1	71.9
Brisbane City Outer Ring	108.4	13.6	122.0	8.6	130.5	6.6	75.1
South and East BSD Balance	72.1	6.8	78.9	8.4	87.3	9.6	79.8
North and West BSD Balance	96.0	10.4	106.4	13.3	119.7	11.1	77.3
<i>Balance of Queensland</i>	419.5	54.0	473.5	49.5	523.0	9.5	74.0
South and East Moreton	74.3	13.0	87.3	9.6	96.8	9.9	70.9
North and West Moreton	52.5	7.8	60.3	7.3	67.6	10.8	66.9
Wide Bay-Burnett	49.1	7.5	56.5	10.4	66.9	15.5	69.1
Darling Downs and South-West	56.5	7.8	64.3	4.1	68.3	5.9	76.4
Mackay, Fitzroy and Central-West	81.3	6.1	87.4	8.6	96.0	8.9	78.4
Northern and North-West	49.1	6.1	55.2	5.8	61.1	9.6	77.6
Far North	56.7	5.8	62.5	3.8	66.3	5.7	81.3
Queensland	779.3	98.7	878.0	88.4	966.3	9.1	74.8
FEMALES							
<i>Brisbane</i>	185.9	132.0	317.9	30.6	348.5	8.8	57.2
Brisbane City Inner Ring	52.6	30.1	82.7	5.7	88.4	6.5	57.3
Brisbane City Outer Ring	59.9	41.7	101.6	8.0	109.6	7.3	57.7
South and East BSD Balance	32.3	23.3	55.7	7.1	62.8	11.3	59.8
North and West BSD Balance	41.1	36.9	78.0	9.7	87.7	11.1	54.8
<i>Balance of Queensland</i>	183.3	145.0	328.3	37.8	366.1	10.3	51.9
South and East Moreton	39.9	28.3	68.3	8.0	76.3	10.5	53.8
North and West Moreton	23.5	21.8	45.4	5.1	50.5	10.2	49.2
Wide Bay-Burnett	21.1	18.0	39.2	5.5	44.7	12.3	47.6
Darling Downs and South-West	21.0	15.1	36.0	4.0	40.1	10.1	44.9
Mackay, Fitzroy and Central-West	30.2	25.9	56.2	8.1	64.2	12.6	52.8
Northern and North-West	24.2	15.0	39.2	3.8	43.0	8.9	52.3
Far North	23.3	20.8	44.1	* 3.2	47.3	* 6.8	63.4
Queensland	369.3	277.0	646.2	68.4	714.6	9.6	54.3
PERSONS							
<i>Brisbane</i>	545.8	176.6	722.4	69.4	791.8	8.8	66.3
Brisbane City Inner Ring	136.0	44.0	180.0	14.3	194.2	7.3	64.4
Brisbane City Outer Ring	168.3	55.2	223.5	16.6	240.1	6.9	66.0
South and East BSD Balance	104.4	30.1	134.5	15.5	150.1	10.3	70.0
North and West BSD Balance	137.1	47.3	184.4	23.0	207.4	11.1	65.9
<i>Balance of Queensland</i>	602.8	199.0	801.8	87.3	889.1	9.8	62.9
South and East Moreton	114.2	41.3	155.5	17.6	173.1	10.2	62.2
North and West Moreton	76.0	29.6	105.7	12.4	118.1	10.5	58.0
Wide Bay-Burnett	70.2	25.5	95.7	15.9	111.6	14.2	58.5
Darling Downs and South-West	77.4	22.8	100.3	8.1	108.4	7.5	60.7
Mackay, Fitzroy and Central-West	111.6	32.0	143.6	16.7	160.2	10.4	65.6
Northern and North-West	73.3	21.1	94.4	9.7	104.1	9.3	64.7
Far North	80.0	26.6	106.6	7.0	113.6	6.2	72.8
Queensland	1,148.6	375.6	1,524.2	156.7	1,680.9	9.3	64.5

TABLE 9 — LABOUR FORCE STATUS: AGE BY MAJOR STATISTICAL REGION, QUEENSLAND, MAY 1996

Age group (years)	Employed			Unemployed '000	Labour force '000	Unem- ployment rate %	Partici- pation rate %
	Full-time '000	Part-time '000	Total '000				
BRISBANE MAJOR STATISTICAL REGION							
15-24	95.6	59.7	155.3	29.8	185.1	16.1	74.2
15-19	20.9	36.2	57.1	16.6	73.7	22.5	64.5
20-24	74.7	23.5	98.2	13.2	111.4	11.8	82.4
25-44	288.8	71.0	359.8	27.5	387.3	7.1	82.2
45 and over	161.4	45.9	207.3	12.1	219.4	5.5	46.3
Total	545.8	176.6	722.4	69.4	791.8	8.8	66.3
BALANCE OF QUEENSLAND							
15-24	107.6	50.4	158.0	32.0	190.0	16.9	72.4
15-19	27.5	34.5	62.0	18.2	80.2	22.7	61.9
20-24	80.1	15.9	96.0	13.8	109.8	12.6	82.6
25-44	309.4	87.9	397.3	39.3	436.6	9.0	79.5
45 and over	185.7	60.7	246.5	16.0	262.5	6.1	43.7
Total	602.8	199.0	801.8	87.3	889.1	9.8	62.9
QUEENSLAND							
15-24	203.2	110.1	313.3	61.8	375.1	16.5	73.3
15-19	48.4	70.8	119.1	34.8	153.9	22.6	63.1
20-24	154.8	39.3	194.2	27.0	221.2	12.2	82.5
25-44	598.3	158.9	757.2	66.7	823.9	8.1	80.7
45 and over	347.1	106.7	453.8	28.2	481.9	5.8	44.8
Total	1,148.6	375.6	1,524.2	156.7	1,680.9	9.3	64.5

DIAGRAM 5 - UNEMPLOYMENT RATE BY AGE, QUEENSLAND

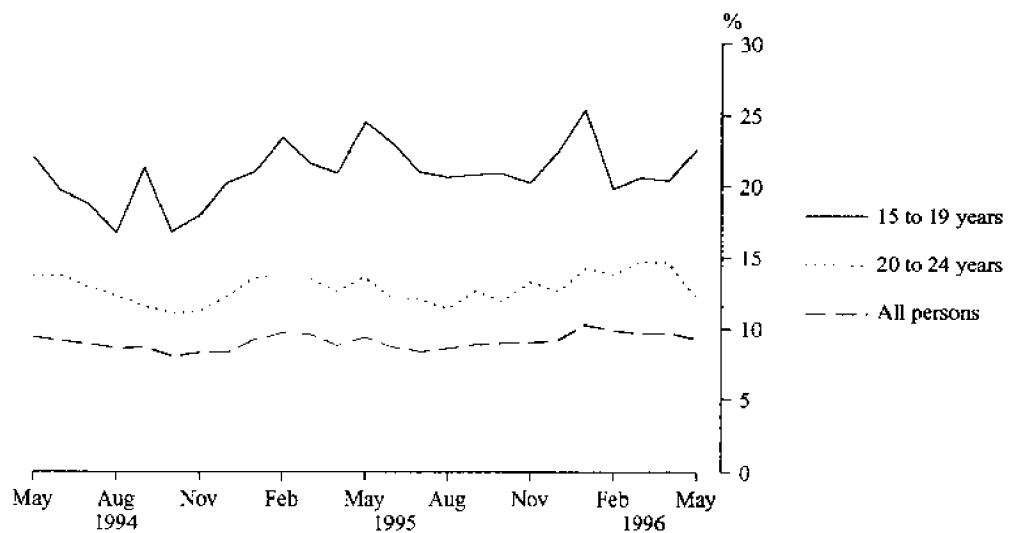


TABLE 10 — LABOUR FORCE STATUS: PERSONS AGED 15 TO 19 YEARS BY FULL-TIME ATTENDANCE AT AN EDUCATIONAL INSTITUTION, QUEENSLAND, MAY 1996

Sex	Employed			Unemployed	Labour force	Not in labour force	Civilian population aged 15 to 19 years	Unemployment rate	Participation rate
	Full-time	Part-time	Total						
	'000	'000	'000	'000	'000	'000	'000	%	%
ATTENDING NEITHER SCHOOL NOR A TERTIARY EDUCATIONAL INSTITUTION FULL-TIME									
Males	31.8	5.3	37.1	13.1	50.2	3.9	54.1	26.1	92.7
Females	16.1	9.0	25.1	7.5	32.6	7.7	40.2	22.9	81.0
Persons	47.9	14.3	62.2	20.5	82.8	11.6	94.4	24.8	87.7
ATTENDING A TERTIARY EDUCATIONAL INSTITUTION FULL-TIME									
Males	* 0.2	8.0	8.3	* 1.8	10.1	9.6	19.7	* 18.0	51.1
Females	* 0.2	13.0	13.2	4.3	17.5	9.8	27.3	24.6	64.1
Persons	* 0.4	21.0	21.4	6.1	27.5	19.4	46.9	22.2	58.7
ATTENDING SCHOOL									
Males	* 0.0	15.5	15.5	3.8	19.3	32.1	51.4	19.8	37.6
Females	* 0.0	20.0	20.0	4.3	24.3	26.9	51.2	17.8	47.5
Persons	* 0.0	35.5	35.5	8.1	43.6	59.0	102.6	18.7	42.5
TOTAL									
Males	32.1	28.8	60.9	18.7	79.6	45.7	125.2	23.5	63.5
Females	16.3	42.0	58.3	16.1	74.4	44.3	118.7	21.6	62.7
Persons	48.4	70.8	119.1	34.8	153.9	90.0	243.9	22.6	63.1

TABLE 11 — LABOUR FORCE STATUS: PERSONS AGED 20 TO 24 YEARS BY FULL-TIME ATTENDANCE AT A TERTIARY INSTITUTION, QUEENSLAND, MAY 1996

Sex	Employed			Unemployed	Labour force	Not in labour force	Civilian population aged 20 to 24 years	Unemployment rate	Participation rate
	Full-time	Part-time	Total						
	'000	'000	'000	'000	'000	'000	'000	%	%
NOT ATTENDING A TERTIARY EDUCATIONAL INSTITUTION FULL-TIME									
Males	89.8	7.7	97.5	15.0	112.5	6.3	118.8	13.3	94.7
Females	63.4	17.8	81.1	8.8	90.0	22.1	112.1	9.8	80.3
Persons	153.1	25.5	178.6	23.8	202.4	28.5	230.9	11.8	87.7
ATTENDING A TERTIARY EDUCATIONAL INSTITUTION FULL-TIME									
Males	* 0.6	6.5	7.1	* 1.7	8.8	8.6	17.4	* 19.1	50.3
Females	* 1.1	7.3	8.4	* 1.6	10.0	9.7	19.7	* 15.6	50.7
Persons	* 1.7	13.9	15.5	* 3.2	18.8	18.4	37.1	* 17.2	50.6
TOTAL									
Males	90.4	14.2	104.6	16.6	121.2	15.0	136.2	13.7	89.0
Females	64.5	25.1	89.6	10.4	99.9	31.8	131.8	10.4	75.8
Persons	154.8	39.3	194.2	27.0	221.2	46.8	268.0	12.2	82.5

TABLE 12—EMPLOYED PERSONS: FULL-TIME OR PART-TIME STATUS, QUEENSLAND

Month	Females								Persons	
	Males		Married		Not married		Total			
	Full-time	Part-time	Full-time	Part-time	Full-time	Part-time	Full-time	Part-time	Full-time	Part-time
'000										
1995 —										
March	756.6	95.2	212.7	183.2	148.4	101.3	361.1	284.6	1,117.6	379.7
April	763.7	93.1	224.3	180.9	150.6	101.1	374.9	282.0	1,138.6	375.1
May	755.7	92.7	219.5	181.4	154.5	93.9	374.0	275.3	1,129.7	368.0
June	765.6	95.1	228.2	176.1	154.8	98.6	383.0	274.6	1,148.6	369.8
July	766.2	94.0	220.3	182.3	159.9	94.6	380.1	276.9	1,146.3	370.9
August	760.6	96.9	212.7	181.6	156.7	91.8	369.4	273.4	1,130.0	370.3
September	769.0	101.6	218.2	183.7	162.9	91.5	381.0	275.2	1,150.0	376.8
October	759.9	98.6	219.2	178.4	156.6	93.7	375.7	272.1	1,135.7	370.7
November	765.9	96.5	225.6	188.6	150.5	94.9	376.1	283.5	1,142.1	380.1
December	781.8	94.5	217.5	192.7	159.6	97.5	377.1	290.2	1,158.9	384.7
1996										
January	770.5	85.5	222.9	171.2	158.4	83.2	381.3	254.4	1,151.9	339.9
February	780.9	90.8	228.1	180.9	146.5	86.6	374.6	267.6	1,155.5	358.4
March	774.7	97.3	224.3	182.6	143.4	91.8	367.7	274.5	1,142.3	371.8
April	778.6	97.6	221.4	182.9	141.0	93.7	362.4	276.6	1,141.0	374.2
May	779.3	98.7	223.9	184.2	145.3	92.8	369.3	277.0	1,148.6	375.6
PER CENT (a)										
1995 —										
March	88.8	11.2	53.7	46.3	59.4	40.6	55.9	44.1	74.6	25.4
April	89.1	10.9	55.4	44.6	59.8	40.2	57.1	42.9	75.2	24.8
May	89.1	10.9	54.8	45.2	62.2	37.8	57.6	42.4	75.4	24.6
June	88.9	11.1	56.4	43.6	61.1	38.9	58.2	41.8	75.6	24.4
July	89.1	10.9	54.7	45.3	62.8	37.2	57.9	42.1	75.6	24.4
August	88.7	11.3	53.9	46.1	63.1	36.9	57.5	42.5	75.3	24.7
September	88.3	11.7	54.3	45.7	64.0	36.0	58.1	41.9	75.3	24.7
October	88.5	11.5	55.1	44.9	62.6	37.4	58.0	42.0	75.4	24.6
November	88.8	11.2	54.5	45.5	61.3	38.7	57.0	43.0	75.0	25.0
December	89.2	10.8	53.0	47.0	62.1	37.9	56.5	43.5	75.1	24.9
1996 —										
January	90.0	10.0	56.6	43.4	65.6	34.4	60.0	40.0	77.2	22.8
February	89.6	10.4	55.8	44.2	62.8	37.2	58.3	41.7	76.3	23.7
March	88.8	11.2	55.1	44.9	60.9	39.1	57.3	42.7	75.4	24.6
April	88.9	11.1	54.8	45.2	60.1	39.9	56.7	43.3	75.3	24.7
May	88.8	11.2	54.9	45.1	61.0	39.0	57.1	42.9	75.4	24.6

(a) Full-time and part-time as a proportion of employed persons in each category.

TABLE 13 — EMPLOYED PERSONS: AVERAGE HOURS WORKED BY STATUS IN EMPLOYMENT,
INDUSTRY DIVISION AND OCCUPATION GROUP,
QUEENSLAND, MAY 1996

<i>Status in employment, industry division and occupation group</i>	<i>Females</i>			<i>Total</i>	<i>Persons</i>
	<i>Males</i>	<i>Married</i>	<i>Not married</i>		
Status in employment					
Employers	48.7	34.5	47.8	35.8	43.8
Own account workers	39.5	26.5	29.2	26.9	35.5
Employees	37.8	29.4	28.7	29.1	34.0
Contributing family workers	16.1	11.6	* 13.3	11.9	13.7
Industry division					
Agriculture, forestry and fishing	41.5	26.6	20.8	25.9	36.6
Mining	39.3	* 44.5	37.8	40.9	39.6
Manufacturing	39.2	30.1	30.8	30.3	37.3
Electricity, gas and water supply	33.2	* 21.1	* 31.0	23.0	31.5
Construction	34.8	18.2	35.0	20.7	32.4
Wholesale trade	40.3	34.0	34.4	34.1	38.6
Retail trade	36.7	30.7	21.8	26.3	31.3
Accommodation, cafes and restaurants	39.5	33.1	23.7	28.6	32.9
Transport and storage	42.4	31.3	37.2	33.3	40.4
Communication services	37.6	29.8	29.5	29.7	34.7
Finance and insurance	42.3	29.1	33.3	30.8	36.0
Property and business services	40.2	27.9	31.9	29.3	35.6
Government administration and defence	35.9	29.0	32.7	30.7	33.9
Education	37.1	30.9	33.5	31.7	33.5
Health and community services	36.6	28.4	33.3	30.1	31.8
Cultural and recreational services	35.3	23.5	29.1	25.6	29.9
Personal and other services	38.7	27.6	28.3	27.9	33.1
Occupation group					
Managers and administrators	49.5	36.9	41.5	37.8	46.6
Professionals	41.0	32.5	36.7	34.0	37.9
Para-professionals	40.5	30.0	36.8	32.2	36.8
Tradespersons	37.0	33.4	34.1	33.7	36.7
Clerks	36.4	26.6	32.8	28.4	30.1
Salespersons and personal service workers	38.1	29.7	23.5	26.6	30.7
Plant and machine operators and drivers	38.6	33.0	34.4	33.5	38.2
Labourers and related workers	31.0	24.8	21.9	23.7	28.5
Full-time workers	41.6	39.9	38.3	39.3	40.8
Part-time workers	14.1	16.0	14.0	15.3	15.0
Total	38.5	29.1	28.8	29.0	34.5

TABLE 14 — EMPLOYED PERSONS: STATUS IN EMPLOYMENT, INDUSTRY DIVISION AND OCCUPATION GROUP, QUEENSLAND, MAY 1996 ('000)

Particulars	Males	Females		Total	Persons
		Married	Not married		
Status in employment					
Employers	49.4	27.0	* 3.0	30.0	79.3
Own account workers	115.6	45.1	8.5	53.6	169.2
Employees	706.9	329.1	225.0	554.1	1,261.0
Contributing family workers	6.1	6.9	* 1.7	8.6	14.7
Industry division					
Agriculture, forestry and fishing	63.1	24.6	3.6	28.2	91.3
Mining	18.1	* 1.7	* 2.0	3.8	21.9
Manufacturing	137.4	26.4	10.0	36.4	173.8
Electricity, gas and water supply	11.0	* 1.7	* 0.4	* 2.2	13.1
Construction	102.1	17.9	* 3.0	20.9	123.0
Wholesale trade	63.5	17.7	7.4	25.1	88.7
Retail trade	111.9	62.4	60.2	122.7	234.6
Accommodation, cafes and restaurants	29.4	24.6	22.0	46.6	76.0
Transport and storage	68.0	12.2	6.5	18.7	86.7
Communication services	15.7	5.4	3.6	9.0	24.7
Finance and insurance	22.0	15.8	10.4	26.1	48.1
Property and business services	79.1	36.9	21.0	57.9	137.0
Government administration and defence	40.7	14.3	11.7	26.0	66.7
Education	37.6	51.5	23.5	75.0	112.5
Health and community services	36.9	67.2	33.4	100.6	137.5
Cultural and recreational services	15.1	11.9	7.4	19.3	34.4
Personal and other services	26.3	15.8	11.9	27.8	54.0
Occupation group					
Managers and administrators	118.5	32.3	7.5	39.9	158.3
Professionals	99.9	50.7	27.2	78.0	177.9
Para-professionals	48.9	27.1	12.5	39.6	88.5
Tradespersons	204.7	14.5	9.7	24.2	228.9
Clerks	50.2	134.6	58.1	192.7	242.9
Salespersons and personal service workers	99.7	90.0	88.5	178.6	278.3
Plant and machine operators and drivers	93.9	4.9	* 2.3	7.2	101.1
Labourers and related workers	162.2	54.0	32.2	86.2	248.3
Total	878.0	408.1	238.1	646.2	1,524.2

TABLE 15 — EMPLOYED PERSONS: INDUSTRY DIVISION BY OCCUPATION GROUP, QUEENSLAND, MAY 1996 ('000)

Industry division	Occupation group								Total
	Managers and administrators	Professionals	Para-professionals	Tradespersons	Clerks	Salespersons and personal service workers	Plant and machine operators and drivers	Labourers and related workers	
Agriculture, forestry and fishing	50.3	* 0.9	* 2.0	3.5	* 3.3	* 0.4	* 1.8	29.2	91.3
Mining	* 1.5	3.7	* 2.0	4.1	* 0.9	* 0.2	6.1	* 3.4	21.9
Manufacturing	16.0	6.1	5.6	61.2	16.5	9.2	22.6	36.8	173.8
Electricity, gas and water	* 0.6	* 1.8	* 1.2	* 3.0	* 3.0	* 0.5	* 1.1	* 1.9	13.1
Construction	11.7	* 1.7	* 2.9	55.5	19.2	* 1.3	12.2	18.6	123.0
Wholesale trade	13.7	* 2.6	* 2.1	12.4	17.6	23.5	6.1	10.7	88.7
Retail trade	19.6	* 3.2	* 1.3	35.0	17.1	119.2	4.7	34.5	234.6
Accommodation, cafes and restaurants	8.8	* 0.9	* 0.9	12.1	6.0	27.1	* 0.4	19.8	76.0
Transport and storage	5.8	* 1.7	* 3.3	7.3	13.1	11.5	33.7	10.4	86.7
Communication services	* 1.5	* 1.3	* 0.2	5.4	12.0	* 1.7	* 1.7	* 0.9	24.7
Finance and insurance	5.4	* 3.1	* 0.9	* 0.0	21.7	16.8	* 0.2	* 0.0	48.1
Property and business services	8.2	33.0	9.5	5.7	35.2	18.5	* 1.5	25.2	137.0
Government administration and defence	4.2	10.5	7.8	4.6	21.5	* 2.7	4.4	11.0	66.7
Education	4.0	67.4	* 1.3	* 1.8	23.8	4.9	* 0.4	9.0	112.5
Health and community services	* 2.2	29.2	34.2	* 2.7	19.6	25.8	* 0.4	23.5	137.5
Cultural and recreational services	* 2.6	6.1	4.4	* 2.9	6.3	7.9	* 0.4	3.8	34.4
Personal and other services	* 2.1	4.9	9.1	11.9	6.1	7.1	* 3.3	9.5	54.0
Total	158.3	177.9	88.5	228.9	242.9	278.3	101.1	248.3	1,524.2

TABLE 16 — UNEMPLOYED PERSONS: DURATION OF UNEMPLOYMENT, BRISBANE MAJOR STATISTICAL REGION

Duration of unemployment	1995			1996		
	March	April	May	March	April	May
MALES						
	'000	'000	'000	'000	'000	'000
Unemployed						
Under 4 weeks	5.9	6.8	4.6	6.6	5.5	6.8
4 and under 8 weeks	4.7	6.2	6.2	5.6	5.7	3.6
8 and under 13 weeks	4.4	3.8	4.9	6.7	5.3	* 3.0
13 and under 26 weeks	4.4	7.6	7.2	6.5	9.3	9.5
26 and under 52 weeks	4.0	4.8	5.0	6.5	7.7	6.8
52 weeks and over	9.9	10.6	11.5	12.3	9.4	9.2
Total	33.2	39.7	39.3	44.2	42.9	38.8
	weeks	weeks	weeks	weeks	weeks	weeks
Median duration of unemployment	16	16	19	16	18	18
FEMALES						
	'000	'000	'000	'000	'000	'000
Unemployed						
Under 4 weeks	7.2	5.9	4.8	6.0	7.8	5.5
4 and under 8 weeks	5.7	4.5	3.9	4.4	3.5	3.6
8 and under 13 weeks	4.8	3.6	* 2.2	4.2	4.5	* 3.3
13 and under 26 weeks	4.5	5.8	8.4	4.3	6.2	7.2
26 and under 52 weeks	3.8	* 2.1	3.6	* 3.4	3.6	4.5
52 weeks and over	6.3	5.3	4.0	5.2	5.2	6.4
Total	32.3	27.3	26.9	27.5	30.8	30.6
	weeks	weeks	weeks	weeks	weeks	weeks
Median duration of unemployment	9	12	15	11	12	17
PERSONS						
	'000	'000	'000	'000	'000	'000
Unemployed						
Under 4 weeks	13.1	12.7	9.4	12.6	13.3	12.3
4 and under 8 weeks	10.4	10.7	10.0	10.0	9.2	7.2
8 and under 13 weeks	9.2	7.4	7.1	11.0	9.8	6.3
13 and under 26 weeks	8.9	13.4	15.5	10.8	15.4	16.7
26 and under 52 weeks	7.8	6.9	8.7	9.8	11.4	11.3
52 weeks and over	16.2	15.9	15.5	17.5	14.6	15.6
Total	65.6	67.0	66.2	71.7	73.7	69.4
	weeks	weeks	weeks	weeks	weeks	weeks
Median duration of unemployment	13	14	17	13	15	17

TABLE 17 — UNEMPLOYED PERSONS: DURATION OF UNEMPLOYMENT, BALANCE OF QUEENSLAND

Duration of unemployment	1995			1996		
	March	April	May	March	April	May
MALES						
	'000	'000	'000	'000	'000	'000
Unemployed						
Under 4 weeks	7.7	7.2	7.5	6.0	6.7	7.6
4 and under 8 weeks	5.5	7.3	6.1	5.8	6.4	4.3
8 and under 13 weeks	8.7	3.9	5.0	6.9	4.5	4.3
13 and under 26 weeks	9.3	10.3	15.2	11.8	13.5	13.0
26 and under 52 weeks	8.6	4.9	8.5	5.2	6.4	7.2
52 weeks and over	15.3	13.6	12.9	15.1	12.4	13.1
Total	55.1	47.2	55.2	50.7	50.0	49.5
	weeks	weeks	weeks	weeks	weeks	weeks
Median duration of unemployment	17	15	19	18	18	20
FEMALES						
	'000	'000	'000	'000	'000	'000
Unemployed						
Under 4 weeks	7.6	6.5	5.5	8.7	7.5	7.3
4 and under 8 weeks	5.4	5.0	3.7	6.9	6.2	6.0
8 and under 13 weeks	6.9	4.3	* 3.4	5.2	4.4	* 3.3
13 and under 26 weeks	4.7	6.7	7.6	6.2	9.0	10.1
26 and under 52 weeks	5.7	* 3.2	4.4	4.5	* 2.9	3.6
52 weeks and over	8.3	6.0	9.6	9.0	9.0	7.5
Total	38.6	31.6	34.3	40.5	39.0	37.8
	weeks	weeks	weeks	weeks	weeks	weeks
Median duration of unemployment	12	13	19	12	13	16
PERSONS						
	'000	'000	'000	'000	'000	'000
Unemployed						
Under 4 weeks	15.2	13.7	13.0	14.7	14.2	14.9
4 and under 8 weeks	10.9	12.3	9.8	12.7	12.6	10.3
8 and under 13 weeks	15.7	8.2	8.4	12.2	8.9	7.6
13 and under 26 weeks	14.0	17.0	22.9	17.9	22.5	23.1
26 and under 52 weeks	14.2	8.0	12.9	9.8	9.3	10.8
52 weeks and over	23.6	19.7	22.6	24.1	21.5	20.6
Total	93.6	78.8	89.5	91.3	89.0	87.3
	weeks	weeks	weeks	weeks	weeks	weeks
Median duration of unemployment	15	14	19	14	16	18

TABLE 18 — UNEMPLOYED PERSONS: DURATION OF UNEMPLOYMENT, QUEENSLAND

Duration of unemployment	1995			1996		
	March	April	May	March	April	May
MALES						
	'000	'000	'000	'000	'000	'000
Unemployed						
Under 4 weeks	13.5	14.0	12.1	12.5	12.2	14.4
4 and under 8 weeks	10.3	13.5	12.2	11.3	12.1	7.9
8 and under 13 weeks	13.1	7.6	9.9	13.7	9.8	7.3
13 and under 26 weeks	13.7	17.9	22.4	18.3	22.8	22.4
26 and under 52 weeks	12.6	9.6	13.5	11.7	14.2	14.0
52 weeks and over	25.1	24.2	24.4	27.4	21.8	22.2
Total	88.3	86.9	94.5	94.9	92.9	88.4
	<i>weeks</i>	<i>weeks</i>	<i>weeks</i>	<i>weeks</i>	<i>weeks</i>	<i>weeks</i>
Median duration of unemployment	17	16	19	17	18	19
FEMALES						
	'000	'000	'000	'000	'000	'000
Unemployed						
Under 4 weeks	14.8	12.4	10.3	14.7	15.3	12.8
4 and under 8 weeks	11.1	9.5	7.6	11.3	9.7	9.6
8 and under 13 weeks	11.7	7.9	5.6	9.5	8.9	6.6
13 and under 26 weeks	9.1	12.5	16.0	10.4	15.2	17.3
26 and under 52 weeks	9.5	5.3	8.1	7.9	6.5	8.1
52 weeks and over	14.6	11.3	13.6	14.2	14.2	13.9
Total	70.9	58.8	61.2	68.0	69.8	68.4
	<i>weeks</i>	<i>weeks</i>	<i>weeks</i>	<i>weeks</i>	<i>weeks</i>	<i>weeks</i>
Median duration of unemployment	10	12	17	12	13	16
PERSONS						
	'000	'000	'000	'000	'000	'000
Unemployed						
Under 4 weeks	28.3	26.4	22.4	27.3	27.5	27.2
4 and under 8 weeks	21.3	23.0	19.8	22.6	21.8	17.5
8 and under 13 weeks	24.8	15.6	15.5	23.1	18.7	13.9
13 and under 26 weeks	22.9	30.4	38.4	28.7	37.9	39.8
26 and under 52 weeks	22.1	14.9	21.6	19.6	20.7	22.2
52 weeks and over	39.8	35.6	38.1	41.6	36.0	36.1
Total	159.2	145.8	155.7	163.0	162.7	156.7
	<i>weeks</i>	<i>weeks</i>	<i>weeks</i>	<i>weeks</i>	<i>weeks</i>	<i>weeks</i>
Median duration of unemployment	14	14	18	14	16	18

TABLE 19 — UNEMPLOYED PERSONS AND UNEMPLOYMENT RATES: INDUSTRY DIVISION AND OCCUPATION GROUP OF LAST FULL-TIME JOB, QUEENSLAND

<i>Unemployment category, industry division and occupation group</i>	<i>May 1995</i>		<i>August 1995</i>		<i>November 1995</i>		<i>February 1996</i>		<i>May 1996</i>	
	<i>Number</i>	<i>Rate</i>	<i>Number</i>	<i>Rate</i>	<i>Number</i>	<i>Rate</i>	<i>Number</i>	<i>Rate</i>	<i>Number</i>	<i>Rate</i>
	<i>'000</i>	<i>%</i>	<i>'000</i>	<i>%</i>	<i>'000</i>	<i>%</i>	<i>'000</i>	<i>%</i>	<i>'000</i>	<i>%</i>
Persons who had worked full-time for 2 weeks or more in the last 2 years	85.8	5.4	79.6	5.0	85.0	5.3	92.8	5.8	86.8	5.4
Industry division										
Agriculture, forestry and fishing	5.5	5.8	5.0	5.5	8.2	8.3	7.9	8.5	5.2	5.4
Manufacturing	13.1	6.6	14.3	7.2	17.4	8.6	14.0	7.1	18.3	9.5
Construction	14.2	10.0	14.4	10.2	12.1	8.4	11.1	8.0	12.0	8.8
Wholesale trade	5.3	5.5	* 3.1	* 3.5	5.2	6.0	6.2	6.9	3.5	3.8
Retail trade	14.7	6.3	12.5	5.2	12.3	5.0	15.1	5.9	12.9	5.2
Health and community services	* 3.4	* 2.6	* 3.2	* 2.4	* 2.7	* 2.0	6.6	4.6	4.9	3.4
Cultural and recreational services	* 2.2	* 5.9	* 1.1	* 3.4	* 2.0	* 5.4	* 1.1	* 3.0	* 2.3	* 6.2
Other industries	27.4	4.2	26.0	3.9	25.1	3.8	30.7	4.7	27.9	4.2
Occupation group										
Managers and administrators	* 1.9	* 1.2	* 1.5	* 1.0	* 2.3	* 1.5	* 1.8	* 1.1	3.5	2.1
Professionals	* 3.3	* 1.8	* 2.5	* 1.3	3.9	2.0	3.9	2.1	* 3.3	* 1.8
Para-professionals	* 3.1	* 3.9	* 1.4	* 1.7	* 3.2	* 3.9	* 3.2	* 3.7	* 3.1	* 3.4
Tradespersons	15.9	7.1	15.3	6.6	14.4	6.1	14.7	5.9	15.9	6.5
Clerks	9.1	3.7	10.1	4.1	9.3	3.6	13.9	5.4	11.3	4.5
Salespersons and personal service workers	17.8	6.2	12.2	4.4	13.0	4.6	19.4	6.5	11.5	4.0
Plant and machine operators and drivers	9.1	7.7	5.9	4.8	8.8	7.4	8.3	7.4	9.8	8.8
Labourers and related workers	25.5	9.0	30.7	10.9	30.2	10.5	27.7	10.6	28.4	10.2
Reason for ceasing last full-time job										
Job loser										
Laid off, retrenched	33.4	..	32.0	..	33.6	..	32.3	..	35.7	..
Other	20.4	..	19.3	..	20.7	..	22.7	..	19.4	..
Job leaver	32.0	..	27.4	..	30.8	..	37.7	..	31.7	..
Other										
Persons looking for first job	13.7	..	14.4	..	9.4	..	10.1	..	13.2	..
Former workers	54.4	..	45.4	..	54.4	..	58.2	..	53.2	..
Persons stood down	* 1.8	..	* 2.5	..	* 2.5	..	4.4	..	3.6	..
Total	155.7	9.4	141.9	8.6	151.3	9.0	165.5	9.9	156.7	9.3
Looking for full-time work	125.3	10.0	115.1	9.2	123.8	9.8	136.6	10.6	124.2	9.8
Looking for part-time work	30.4	7.6	26.8	6.8	27.5	6.8	28.9	7.5	32.5	8.0

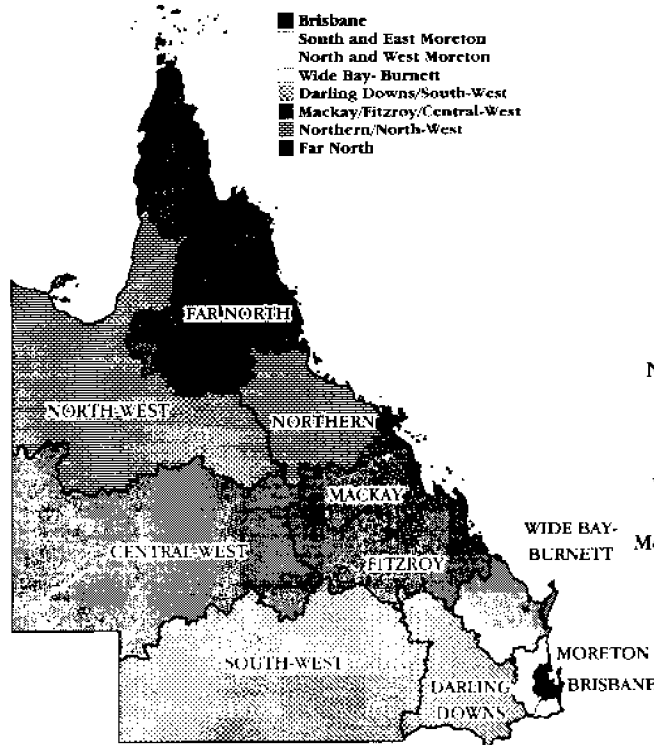
SPECIAL SURVEYS DATA RELATING TO THE LABOUR FORCE

Although emphasis in the population survey is placed on the regular collection of demographic and labour force characteristics data, supplementary and special surveys of particular aspects of the labour force are carried out from time to time. The results of these surveys on labour force and related topics are published separately as shown below. All publications refer to Australia.

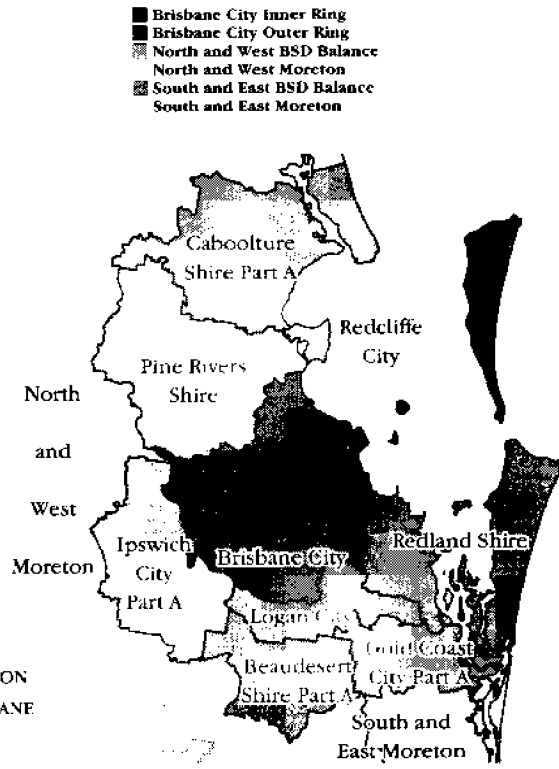
Title of Publication	Latest Data	Catalogue No.
Annual and Long Service Leave Taken	May 1988 to April 1989	6317.0
Career Experience	February 1993	6254.0
Career Paths of Persons with Trade Qualifications	1993	6243.0
Career Paths of Qualified Nurses, Australia	March to July 1989	6277.0
Child Care	June 1993	4402.0
Employment Benefits	August 1994	6334.0.40.001
Job Search Experience of Unemployed Persons	July 1995	6222.0.40.001
Labour Force Experience	February 1995	6206.0.40.001
Labour Force Status and Educational Attainment	February 1994	6235.0
Labour Force Status and Other Characteristics of Families	June 1995	6224.0.40.001
Labour Force Status and Other Characteristics of Migrants	September 1993	6250.0
Labour Mobility	February 1994	6209.0
Multiple Jobholding	August 1994	6216.0.40.001
Participation in Education (<i>formerly</i> Labour Force Status and Educational Attendance)	September 1994	6272.0.40.001
Persons Employed at Home	September 1995	6275.0
Persons Not in the Labour Force	September 1995	6220.0.40.001
Persons Who Had Re-entered the Labour Force	July 1995	6264.0.40.001
Persons Who Have Left the Labour Force	September 1994	6267.0.40.001
Retirement and Retirement Intentions	November 1994	6238.0.40.001
Successful and Unsuccessful Job Search Experience	July 1994	6245.0
Superannuation	November 1995	6319.0
Survey of Income and Housing Costs and Amenities	1989-90	6546.0
Trade Union Members	August 1994	6325.0.40.001
Training and Education Experience (<i>formerly</i> How Workers Get Their Training)	1993	6278.0
Transition From Education to Work	May 1995	6227.0.40.001
Underemployed Workers	September 1995	6265.0.40.001
Weekly Earnings of Employees (Distribution)	August 1995	6310.0.40.001
Working Arrangements	August 1995	6342.0.40.001

Summary reports and special tabulations at the national, State and regional level can be prepared for any aspect of the labour force required or on any aspect of employment, earnings or industrial conditions. Please contact the Information Inquiry Service on (07) 3222 6351 for details or write to the Australian Bureau of Statistics, GPO Box 9817, Brisbane Q 4001.

STATISTICAL REGIONS, QUEENSLAND



STATISTICAL REGIONS, BRISBANE AND MORETON DIVISIONS



Brisbane City Inner Ring

Albion	Clayfield	Highgate Hill	Red Hill
Alderley	Coorparoo	Holland Park	Sherwood
Annerley	Corinda	Holland Park West	South Brisbane
Ascot	Dutton Park	Indooroopilly	Spring Hill
Ashgrove	East Brisbane	Kangaroo Point	St Lucia
Balmoral	Enoggera (including	Kedron	Stafford
Bardon	Military Camp)	Kelvin Grove	Stafford Heights
Bowen Hills	Fairfield	Lutwyche	Taringa
Bulimba	Fortitude Valley - Inner	Milton	Tarragindi
Camp Hill	Fortitude Valley - Remainder	Moorooka	Toowong
Cannon Hill	Graceville	Morningside	West End
Carina	Grange	New Farm	Wilston
Carina Heights	Greenslopes	Newmarket	Windsor
Carindale	Hamilton	Newstead	Woolloongabba
Chelmer	Hawthorne	Norman Park	Wooloowin
City - Inner	Hendra	Nundah	Yeerongpilly
City - Remainder	Herston	Paddington	Yeronga

RECENT RELEASES OF INTEREST

Underemployed Workers, Australia, September 1995 (6265.0.40.001), (\$25.00)

Measures an insufficiency in the volume of employment (i.e. hours worked). It provides details of persons currently working part-time who would prefer to work more hours each week and persons who usually work full-time but did not do so in the reference week. Details include information about the jobs in which underemployed workers are employed, their employment preferences and whether they are looking for work with more hours.

Persons Employed at Home, Australia, September 1995 (6275.0), (\$14.50)

Provides details of persons who usually worked more hours at home than elsewhere in their main or second job or business. Information as to number of hours usually worked at home, reason for working at home, usual gross weekly pay, industry and occupation is included.

Superannuation, Australia, November 1995 (6319.0), (\$16.50)

Provides details of persons who currently belong to a superannuation scheme. Some details of persons who once belonged to a superannuation scheme are also provided. The type of data items provided include: State and Territory, age, sex, full-time or part-time status, weekly contributions to scheme, whether belong to more than one scheme, provider of scheme and time in superannuation scheme.

LABOUR FORCE SUPPLEMENTARY SURVEY PROGRAM - 1996

Topic	Survey Month
Labour Mobility	February 1996
Transition from Education to Work	May 1996
Job Search Experience of Unemployed Persons	June 1996
Successful and Unsuccessful Job Search Experience	June 1996
Weekly Earnings of Employees (Distribution)	July 1996
Employee Benefits	July 1996
Trade Union Membership	July 1996
Persons Not in the Labour Force	September 1996
Underemployed Workers	September 1996
Educational Attendance	September 1996
Career Experience of Migrants	November 1996

PC Ausstats

What is PC AUSSTATS?

- a 24-hour on line access system to the latest Australian Bureau of Statistics (ABS) data
- enables you to manipulate ABS data for your own purposes
- an access to ABS time series data
- In general the data available on PC AUSSTATS can be used to look for trends in economic and demographic conditions at national and State levels.



PC Ausstats

Mail to:

ABS
Sales and Marketing
GPO Box 9817
Brisbane Q 4001

Yes, I'd like to know more about this product.

or fax: 3222 6283

Miss/Mrs/Ms/Mr:

Position:

Organisation:

Address:

Postcode:

What is the main activity of your organisation?

EXPLANATORY NOTES

THE POPULATION SURVEY

1 This survey is based on a multi-stage area sample of private dwellings and non-private dwellings (hotels, motels, etc.) and usually covers approximately three-fifths of 1% of the population of Queensland. The information is obtained from the occupants of selected dwellings by carefully chosen and specially trained interviewers. The interviews are generally conducted during a period of 2 weeks beginning on the Monday between the 6th and 12th of each month. The information obtained relates to the week before the interview (i.e. the reference week).

SCOPE

2 The labour force survey includes all persons aged 15 years and over except:

- (a) members of the permanent defence forces,
- (b) certain diplomatic personnel of overseas governments, customarily excluded from Census and estimated populations,
- (c) overseas residents in Australia and
- (d) members of non-Australian defence forces (and their dependants) stationed in Australia.

COVERAGE

3 In the labour force survey, coverage rules are applied which aim to ensure that each person is associated with only one dwelling and hence has only one chance of selection. The coverage rules are, necessarily, a balance between theoretical and operational considerations. Nevertheless, the chance of a person being enumerated at two separate dwellings in the one survey is considered to be negligible.

4 Persons who are away from their usual residence for 6 weeks or less at the time of interview are enumerated at their usual residence when relevant information can be obtained from other usual residents present at the time of the survey.

SUPPLEMENTARY AND SPECIAL SURVEYS

5 Emphasis in the population survey is placed on the regular collection of specific data on demographic and labour force characteristics of the population. However, supplementary and special surveys of particular aspects of the labour force, or of other subjects, are carried out from time to time. Statistics from these surveys are published and are available on request. A list of survey publications on labour force and related topics is shown on page 20.

POPULATION BENCHMARKS

6 Labour force survey estimates of persons employed, unemployed and not in the labour force are calculated in such a way as to add up to the independently estimated distribution of the population aged 15 years and over by age and sex. This procedure compensates for under-enumeration in the survey and leads to more reliable estimates. The independent population statistics (benchmarks) are the latest available estimates at the time the labour force survey is conducted. They usually differ from the official population estimates subsequently published in the quarterly ABS publication *Australian Demographic Statistics* (3101.0) because they are necessarily derived from incomplete information about population changes.

7 Since regular estimates of the population are not available at the regional level, the State benchmarks were used to produce regional estimates. This methodology assumes a common pattern of under-enumeration at the regional level and also ensures that regional estimates add to the State totals.

8 While this procedure can be expected to provide reliable estimates of unemployment and participation rates, it cannot be taken as completely reliable for estimates of numbers involved. For this reason estimates of

numbers in each region have not been added to provide an estimate of the total civilian population aged 15 years and over.

REVISION OF SERIES

9 Survey estimates are not revised for the usually small amendments of population benchmarks arising from new data on deaths and overseas and internal migration. Revisions are made, however, after each census of population and housing and when population estimation bases are reviewed. These revisions affect unadjusted, seasonally adjusted and trend estimates. The last such revision was made in February 1994 to take account of the results of the 1991 Census of Population and Housing. This affected all the monthly estimates from January 1989 to January 1994.

10 The estimates shown in this publication are based entirely on place of usual residence. Prior to October 1982, the estimates were based on a combination of place of enumeration and place of usual residence.

11 Until February 1978, surveys were conducted in February, May, August and November each year from 1964. From February 1978 the survey has been conducted on a monthly basis.

12 The questionnaire used in the survey for the collection of labour force data has been revised a number of times. Details of these changes have been published in *Information Paper: Questionnaires Used in the Labour Force Survey* (6232.0) in March 1978, December 1981, August 1984, June 1986, June 1991 and March 1993.

COMPARABILITY OF SERIES

13 As noted in paragraph 9, estimates from January 1989 have been revised to conform to revised population estimates following the 1991 Census of Population and Housing and are thus not strictly comparable with estimates for periods prior to January 1989, which have not been revised.

14 Regional estimates are based on statistical regions from September 1987. They are not comparable with estimates prior to that date which were based on differently composed dissemination regions.

15 Comparability with estimates produced from the quarterly survey of employment and earnings is affected by the use of a different survey methodology and definitions. The labour force survey provides estimates of people in jobs whereas the survey of employment and earnings provides an estimate of the number of jobs held by employees. A more detailed description of the differences between these two series is provided in *Information Paper: Comparison of Employment Estimates from the Labour Force Survey and the Survey of Employment and Earnings* (6263.0).

RELIABILITY OF ESTIMATES

16 Estimates in this publication are subject to two sources of error.

(a) *Sampling error.* Since the estimates are based on information obtained from occupants of a sample of dwellings, they and the movements derived from them, may differ from the figures that would have been produced if all dwellings had been included in the survey. More information on this topic is given in the Technical Notes.

(b) *Non-sampling error.* Inaccuracies may occur because of imperfections in reporting by respondents and interviewers and errors made in coding and processing data. These inaccuracies may occur in any enumeration, whether it be a full count or a sample. Every effort is made to reduce the non-sampling error to a minimum by careful design of questionnaires, intensive training and supervision of interviewers and efficient operating procedures.

RELIABILITY OF REGIONAL
LABOUR FORCE ESTIMATES

17 While the Labour Force Survey is designed primarily to produce reliable estimates at the national and State or Territory level, it also delivers estimates for a number of regions within States.

As with the national and State estimates, regional labour force estimates are subject to sampling error. Since estimates for regions are components of corresponding State level and thus are based on a considerably smaller sample size, they are subject to higher relative standard errors. Care should therefore be taken in the interpretation of regional estimates, particularly when comparing month-to-month movements. Tables of standard errors for each region are available later in this publication.

SURVEY SAMPLE REDESIGN

18 The labour force survey sample was redesigned and reselected using information collected in the 1991 Census of Population and Housing. The new sample was phased in over the period September to December 1992. For details, see *Information Paper: Labour Force Survey — Sample Design* (6269.0).

19 For the most part, one quarter of the new sample was introduced each month so that, by December 1992, the entire new sample was in place. Replacement occurred generally at the rotation group level with two groups substituted each month. Such a pattern of implementation means that any changes to labour force estimates due to differences between the two samples, or any other influences, were spread over 4 months rather than being concentrated in one inter-month period.

20 This phase-in scheme applied to the private dwelling sample in urban areas. The new sample for non-private dwellings and private dwellings in rural areas was introduced in a single stage in November 1992.

21 The sampling fraction differs for States and Territories to enable estimates of reasonable accuracy to be produced at State level as well as for Australia. The sampling fraction for Queensland is 1 in 195.

POTENTIAL EFFECTS ON LABOUR
FORCE SURVEY ESTIMATES

22 Implications for estimates produced from the Labour Force Survey due to sample redesign and its implementation are as follows:

(a) The sampling error in Queensland increased overall initially by about 8% over the previous level but will decline gradually during the life of the new sample. There were also higher standard errors for the estimates of month-to-month movements produced during the period September 1992 to December 1992 compared with those for the corresponding series produced prior to this period and from January 1993 onwards. *Overall, these are estimated to be up to 20% higher than the normal standard errors for monthly movements.*

(b) Analysis has shown that the unemployment rate was marginally higher (less than 0.5 percentage points) for those persons in sample for the first time. Normally, this will not affect the overall estimates of month-to-month movements because the number of persons in sample does not change significantly. However, during the transition period, there were twice as many as usual in sample for the first time. This may have caused a small upward movement (of less than 0.1 percentage points) in the unemployment rate from August 1992 to September 1992 and a compensating decrease from December 1992 to January 1993.

SEASONAL ADJUSTMENT

23 Seasonal adjustment is a means of removing the estimated effects of normal seasonal variation from the series so that the effect of other influences on the series can be more clearly recognised. Seasonal adjustment does not remove the irregular or non-seasonal influences which

may be present in any particular month. Influences that are volatile can still make it difficult to interpret the movement of the series even after adjustment for seasonal variation. Seasonal factors are reviewed annually to take account of each additional year of original data.

TREND ESTIMATION

24 Smoothed seasonally adjusted series produce a measure of trend by reducing the impact of the irregular component of the series. The trend estimates are derived by applying a 13-term Henderson-weighted moving average to the respective seasonally adjusted series. These trend series are used to analyse the underlying behaviour of the series over time.

25 While this smoothing technique enables estimates to be produced which include the latest month, it does result in revisions to the most recent months as additional observations become available. Generally, subsequent revisions become smaller and after 3 months have a negligible impact on the series. There will also be revisions as a result of the annual review of seasonal factors.

MONTH-TO-MONTH MOVEMENTS

26 Care should be taken in the interpretation of month-to-month movements in labour force survey estimates as they are subject to sampling and non-sampling variability as explained in paragraph 16.

RELATED PUBLICATIONS

27 Other ABS publications which may be of interest include:

Labour Force, Australia, Preliminary (6202.0)

Labour Force, Australia (6203.0)

Labour Force, Australia (6204.0)

Monthly Summary of Statistics, Queensland (1304.3)

Economic Indicators, Queensland (1307.3)

A Guide to Interpreting Time Series — Monitoring 'Trends' (1349.0)

Information Paper: Comparison of Employment Estimates from the Labour Force Survey and the Survey of Employment and Earnings (6263.0)

Information Paper: A Guide to Interpreting Time Series — Monitoring 'Trends' — An Overview (1348.0)

Information Paper: Labour Force Survey — Sample Design (6269.0)

Information Paper: Labour Force Survey — Measuring Teenage Unemployment (6270.0)

Information Paper: Measuring Employment and Unemployment (6279.0)

Information Paper: Regional Labour Force Statistics (6262.0)

28 Current publications produced by the ABS are listed in the *Catalogue of Publications and Products* (1101.0). The ABS also issues the *Release Advice* (1105.0) on Tuesdays and Fridays which lists publications to be released in the next few days. Both the *Catalogue* and the *Release Advice* are available from any ABS office.

UNPUBLISHED STATISTICS

29 As well as the statistics included in this and related publications, the ABS may have other relevant unpublished data available. Inquiries should be made to the contact shown at the front of this publication.

SYMBOLS AND OTHER USAGES

.. not applicable

* subject to sampling variability too high for most practical purposes (see paragraphs 8 and 9 of the Technical Notes)

30 Where figures have been rounded, discrepancies may occur between totals and the sums of the component items.

TECHNICAL NOTES

ESTIMATION PROCEDURE

1 The labour force estimates are derived from the monthly population survey by use of a complex ratio estimation procedure, which ensures that the survey estimates conform to an independently estimated distribution of the population by age and sex, rather than to the age and sex distribution within the sample itself. This procedure compensates for under-enumeration in the survey and leads to more reliable estimates.

2 Since regular estimates of the population are not available at the regional level, the State benchmarks were used to produce regional estimates. This methodology assumes a common pattern of under-enumeration at the regional level and also ensures that regional estimates add to the State totals.

DATA QUALITY

3 Two types of error are possible in an estimate based on a sample survey: sampling error and non-sampling error. Non-sampling error is explained in the Explanatory Notes, paragraph 16 (b). The sampling error is a measure of the variability that occurs by chance because a sample, rather than the entire population, is surveyed.

Standard error of estimates

4 One measure of the variability of estimates which occurs as a result of surveying only a sample of the population is the standard error (SE).

5 There are about two chances in three that a sample estimate will differ by less than one standard error from the figure that would have been obtained if all dwellings had been included and about 19 chances in 20 that the difference will be less than two standard errors.

6 The standard error of an estimate can be obtained from Table A. Linear interpolation should be used to calculate the standard error of estimates falling between the sizes of estimates listed in the table (see example in paragraphs 12 and 13 following).

7 Standard errors for some estimates, e.g. unemployment, can vary from those shown in the tables. Methods for calculating the standard errors of these estimates are shown in paragraph 13.

Relative standard error

8 Another measure of sampling variability is the relative standard error (RSE). This is obtained by expressing the standard error as a percentage of the estimate to which it refers. The relative standard error is a useful measure in that it provides an immediate indication of the percentage errors likely to have occurred due to sampling and thus avoids the need to refer also to the size of the estimate.

9 In the tables in this publication, only estimates with relative standard errors of 25% or less, and percentages based on such estimates, are considered sufficiently reliable for most purposes. However, estimates and percentages with larger relative standard errors have been included and are preceded by an asterisk (e.g. * 3.0) to indicate they are subject to high standard errors and should be used with caution. Small estimates are subject to such high standard errors (relative to the size of the estimate) as to detract seriously from their value for most reasonable use.

Standard error of movement

10 The movement in the level of an estimate is also subject to sampling variability. The standard error of the movement depends on the levels of the estimates from which the movement is obtained rather than the size of the movement. Standard errors of monthly movements are given in Table B. These estimates apply only to estimates of movements between two consecutive months.

11 Movements between corresponding months of consecutive quarters, i.e. quarterly movements, can be obtained by multiplying the figures in Table B by 1.21. Standard errors of movements between corresponding months of consecutive years, i.e. annual movements, can be obtained by multiplying the figures in Table A by 1.3. When using Tables A or B to calculate standard errors of movements, refer to the larger of the two estimates from which the movement is derived.

LINEAR INTERPOLATION

12 Linear interpolation is used to determine the standard error of an estimate which falls between two values listed in the size of estimate column in Tables A or B. Linear interpolation is best described using an example. In May 1996 there were 646 200 (X_e) employed females in Queensland. This estimate falls between 500 000 (X_u) and 1 000 000 (X_l) in Table A.

13 The standard error of the estimate is determined as follows:

$$\begin{aligned} \text{Firstly calculate } F &= \frac{X_e - X_l}{X_u - X_l} \\ &= \frac{646\,200 - 500\,000}{1\,000\,000 - 500\,000} \\ &= 0.292 \end{aligned}$$

Secondly, calculate the standard error of the estimate, $SE(X_e)$ thus,

$$\begin{aligned} SE(X_e) &= SE(X_l) + F[SE(X_u) - SE(X_l)] \\ &= 7\,000 + 0.292 \times [8\,900 - 7\,000] \\ &= 7\,555 \\ &= 7\,600 \text{ rounding to the nearest 100} \end{aligned}$$

Therefore the standard error of the number of employed females in Queensland in May 1996 (646 200) is 7 600.

METHODS FOR CALCULATING THE STANDARD ERRORS FOR SELECTED ESTIMATES

<i>Measure of reliability to be determined</i>	<i>Method</i>
Standard errors of estimates of employed persons.	Determine the SE from Table A directly.
Standard errors of estimates of unemployed persons.	Multiply the SE from Table A by 0.97.
Standard errors of estimates of persons not in the labour force.	Multiply the SE from Table A by 1.06.
Standard errors of rates (e.g. the unemployment rate which is based on the number of unemployed persons expressed as a percentage of the number of persons in the labour force).	Determine the RSE of the numerator (x) and the denominator (y) then apply the following formula. $RSE(x/y) = \sqrt{[RSE(x)]^2 + [RSE(y)]^2}$
Standard error of average hours worked.	Determine the RSE for the number of persons on which the average is based, multiply this by 0.7.
Standard error of median duration of unemployment.	Determine the RSE for the number of persons on which the median is based, multiply this by 2.0.
Standard error of monthly movements.	Using Table B, look up the SE of the larger estimate.
Standard error of quarterly movements.	Determine the standard error of the larger estimate (using Table A), multiply this by 1.21.
Standard error of annual movements.	Determine the standard error of the larger estimate (using Table A) and multiply this by 1.3.

A

STANDARD ERRORS OF ESTIMATES FOR STATISTICAL REGIONS AND QUEENSLAND

Size of estimate	Brisbane (MSR) Statistical Regions										Balance of Queensland Statistical Regions					
	Queensland; Brisbane (MSR); Balance of Queensland	Inner Ring	Brisbane City	Outer Ring	South and East Brisbane Statistical Division Balance	North and West Brisbane Statistical Division Balance	South and East Moreton	North and West Moreton	Wide Bay-Burnett	Darling Downs and South-West	Mackay, Fitzroy and Central-West	North-West	Far North			
200	No. 210	No. 160	No. 170	No. 170	No. 170	No. 170	No. 160	No. 170	No. 180	No. 180	No. 180	No. 170	No. 190			
300	260	200	210	220	210	210	200	220	230	220	220	210	240			
500	340	260	270	280	280	280	270	280	300	290	290	270	310			
700	400	310	320	340	330	330	320	340	350	340	340	320	370			
1 000	480	380	390	410	400	400	380	410	430	420	420	390	440			
1 500	590	470	480	500	500	500	470	500	530	510	510	480	550			
2 000	680	540	560	590	580	580	550	590	620	600	600	560	640			
2 500	750	610	630	660	650	650	620	660	690	670	670	630	720			
3 000	820	670	690	720	720	720	680	720	760	740	740	690	790			
4 000	940	780	800	840	830	830	790	840	890	860	860	810	920			
5 000	1 050	880	900	950	940	940	890	950	1 000	970	970	910	1 050			
7 000	1 200	1 050	1 100	1 150	1 100	1 100	1 050	1 150	1 200	1 150	1 150	1 100	1 250			
10 000	1 400	1 250	1 300	1 350	1 350	1 350	1 300	1 350	1 450	1 400	1 400	1 300	1 500			
15 000	1 700	1 550	1 600	1 700	1 650	1 650	1 600	1 700	1 750	1 700	1 700	1 600	1 850			
20 000	1 950	1 800	1 850	1 950	1 950	1 950	1 850	1 950	2 050	2 000	2 000	1 900	2 150			
30 000	2 300	2 250	2 300	2 450	2 400	2 400	2 300	2 400	2 550	2 450	2 450	2 350	2 650			
50 000	2 850	2 950	3 050	3 150	3 150	3 150	3 000	3 150	3 350	3 250	3 250	3 050	3 450			
70 000	3 250	3 500	3 600	3 800	3 750	3 750	3 550	3 800	4 000	3 850	3 850	3 650	4 100			
100 000	3 750	4 250	4 350	4 550	4 500	4 500	4 300	4 550	4 800	4 650	4 650	4 350	4 950			
150 000	4 400	5 200	5 400	5 600	5 500	5 500			
200 000	4 950	6 100	6 300	6 600	6 500	6 500	6 200	6 600	6 900	6 700	6 700	6 300	7 100			
300 000	5 800	7 500	7 700	8 100	8 000	8 000	7 600	8 100	8 500	8 300	8 300	7 800	8 800			
500 000	7 000	9 900	10 100	10 600	10 500	10 500	10 000	10 600	11 200	10 800	10 800	10 200	11 500			
1 000 000	8 900			
2 000 000	11 300			

B STANDARD ERRORS OF MONTHLY MOVEMENTS FOR STATISTICAL REGIONS AND QUEENSLAND

Size of estimate	Brisbane (MSR) Statistical Regions										Balance of Queensland Statistical Regions																			
	Queensland;					South and West					North			South and East			North and West			Darling Downs and Mackay, Fitzroy and Central-West			Northern and North-West			Far North				
	No.	%	Brisbane City	Brisbane City	Brisbane City	Inner Ring	Outer Ring	Statistical Division	Statistical Division	Statistical Division	Balance	Statistical Division	Statistical Division	Balance	Statistical Division	Statistical Division	Balance	Statistical Division	Statistical Division	Balance	Statistical Division	Statistical Division	Balance	Statistical Division	Statistical Division	Balance	Statistical Division	Statistical Division	Balance	
1 000	58.0	330	310	250	320	290	300	340	320	340	340	300	300	340	320	340	320	340	320	340	320	340	320	340	320	340	320	340	320	290
1 500	44.0	400	370	300	380	340	350	400	380	400	350	350	400	390	390	410	390	410	390	410	390	410	390	410	390	410	390	410	390	340
2 000	36.5	450	420	340	440	390	400	460	440	460	400	400	460	440	440	460	440	460	440	460	440	460	440	460	440	460	440	460	390	
2 500	31.6	500	470	370	480	430	440	500	480	500	440	440	500	480	480	510	480	510	480	510	480	510	480	510	480	510	480	510	430	
3 000	28.0	540	510	400	520	460	480	550	520	550	480	480	550	520	520	550	520	550	520	550	520	550	520	550	520	550	520	550	460	
4 000	23.3	610	570	460	590	530	540	620	590	620	540	540	620	590	590	620	590	620	590	620	590	620	590	620	590	620	590	620	530	
5 000	20.0	670	630	500	650	580	600	680	650	680	600	600	680	650	650	680	650	680	650	680	650	680	650	680	650	680	650	680	580	
7 000	16.4	770	730	580	750	670	690	790	750	790	690	690	790	750	750	790	750	790	750	790	750	790	750	790	750	790	750	790	670	
10 000	12.5	900	850	680	880	780	810	920	880	920	810	810	920	880	880	920	880	920	880	920	880	920	880	920	880	920	880	920	780	
15 000	9.7	1 100	1 000	810	1 050	930	960	1 100	1 050	1 100	960	960	1 100	1 050	1 050	1 100	1 050	1 100	1 050	1 100	1 050	1 100	1 050	1 100	1 050	1 100	1 050	1 100	930	
20 000	8.0	1 200	1 150	920	1 200	1 050	1 100	1 250	1 200	1 250	1 100	1 100	1 250	1 200	1 200	1 250	1 200	1 250	1 200	1 250	1 200	1 250	1 200	1 250	1 200	1 250	1 200	1 250	1 050	
30 000	6.2	1 450	1 350	1 100	1 400	1 250	1 300	1 500	1 400	1 500	1 300	1 300	1 500	1 400	1 400	1 500	1 400	1 500	1 400	1 500	1 400	1 500	1 400	1 500	1 400	1 500	1 400	1 500	1 250	
50 000	4.4	1 800	1 700	1 350	1 750	1 550	1 600	1 850	1 750	1 850	1 600	1 600	1 850	1 750	1 750	1 850	1 750	1 850	1 750	1 850	1 750	1 850	1 750	1 850	1 750	1 850	1 750	1 850	1 550	
100 000	2.8	2 450	2 300	1 850	2 400	2 100	2 200	2 500	2 400	2 500	2 200	2 200	2 500	2 400	2 400	2 500	2 400	2 500	2 400	2 500	2 400	2 500	2 400	2 500	2 400	2 500	2 400	2 500	2 150	
200 000	1.8	3 300	3 150	2 500	3 200	2 850	2 950	3 350	3 200	3 350	2 950	2 950	3 350	3 200	3 200	3 350	3 200	3 350	3 200	3 350	3 200	3 350	3 200	3 350	3 200	3 350	3 200	3 350	2 850	
300 000	1.4	3 950	3 750	2 950	3 850	3 400	3 550	4 000	3 850	4 000	3 550	3 550	4 000	3 850	3 850	4 000	3 850	4 000	3 850	4 000	3 850	4 000	3 850	4 000	3 850	4 000	3 850	4 000	3 450	

GLOSSARY

Attending school	Persons aged 15 to 19 years who, during the reference week, were enrolled full-time at secondary or high schools.
Attending tertiary educational institution full-time	Persons aged 15 to 24 years who, during the reference week, were enrolled full-time at a TAFE college, university or other educational institution.
Average hours worked	Aggregate hours worked by a group divided by the number of persons in that group.
Average duration of unemployment	For a group of unemployed persons, the aggregate duration of unemployment divided by the number of persons in the group.
Duration of unemployment	The period from the time a person began looking for work or was stood down, to the end of the reference week. Thus the survey measures current (and continuing) periods of unemployment rather than completed spells. For persons who may have begun looking for work while still employed, the duration of unemployment is defined as the period from the time the person last worked full-time for 2 weeks or more to the end of the reference week.
Employed	Persons aged 15 years and over who, during the reference week: (a) worked for 1 hour or more for pay, profit, commission or payment in kind in a job or business or on a farm (comprising employees, employers and own account workers); (b) worked for 1 hour or more without pay in a family business or on a farm (i.e. contributing family workers); (c) were employees who had a job but were not at work and were: on paid leave; on leave without pay for less than 4 weeks up to the end of the reference week; stood down without pay because of bad weather or plant breakdown at their place of employment for less than 4 weeks up to the end of the reference week; on strike or locked out; on workers' compensation and expected to be returning to their job; receiving wages or salary while undertaking full-time study or (d) were employers, own account workers or contributing family workers who had a job, business or farm, but were not at work.
Former workers	Unemployed persons who have previously worked full-time for 2 weeks or more but not in the past 2 years.
Full-time workers	Employed persons who usually worked 35 hours or more a week (in all jobs) and others who, although usually working less than 35 hours a week, worked 35 hours or more during the reference week.
Hours worked	The total number of hours a group of employed persons has actually worked during the reference week, not necessarily hours paid for.

Job leavers Unemployed persons who have worked full-time for 2 weeks or more in the past 2 years and *left that job voluntarily*, that is, because of unsatisfactory work arrangements, pay or hours; the job was seasonal, temporary or a holiday job and they left that job to return to studies; their last job was running their own business and they closed down or sold that business for reasons other than financial difficulties, or any other reasons.

Job losers Unemployed persons who have worked full-time for 2 weeks or more in the past 2 years and *left that job involuntarily*, that is, were laid off or retrenched from that job; left that job because of their own ill-health or injury; the job was seasonal or temporary and they did not leave that job to return to studies, or their last job was running their own business and the business closed down because of financial difficulties.

Industry From August 1994, Labour Force Survey industry data are classified according to the Australian and New Zealand Standard Industrial Classification (ANZSIC). Like the previous Australian Standard Industrial Classification (ASIC), ANZSIC classifies businesses according to their economic activities, in a structure consisting of four levels (Division, Sub-division, Group and Class). Labour Force Survey data are coded at the group level, as was the practice under ASIC. To assist users in making comparisons with previously published data, a concordance had been developed which shows for each ASIC Group, the corresponding ANZSIC Group or Groups. The concordance also shows the estimated employment attributable to each ANZSIC Group, compared with ASIC Group data, according to establishment unit employment data on the ABS Business Register at May 1994. Historical estimates of employment by ANZSIC Group have been compiled on the basis of the concordance, and are available on request. For further information about the application of ANZSIC, see *Information Paper: Labour Force Survey: Introduction of ANZSIC for Industry Data* (6259.0) and *Australian and New Zealand Standard Industry Classification 1993* (1292.0).

It has since been found that the concordance, which was based on preliminary investigations, did not provide the most appropriate conversion for certain Group level industries. An improved concordance has now been applied to historical Labour Force Survey estimates.

This concordance is published in the *Information Paper: Labour Force Survey: Revisions to Historical ANZSIC Industry Data* (6259.0).

Labour force For any group, persons who were employed or unemployed, as defined.

Labour force status A classification of the civilian population aged 15 years and over into employed, unemployed or not in the labour force, as defined. The definitions conform closely to the international standard definitions adopted by the International Conferences of Labour Statisticians.

Marital status	Persons are classified as married (husband and wife) if they are reported as being married (including de facto) and their spouse was a usual resident of the household at the time of the survey. The not married category comprises persons who have never married, or are separated, widowed or divorced, as well as those who, although reported as being married, did not have a spouse who usually lived in the household.										
Median duration of unemployment	The duration which divides unemployed persons into two equal groups, one comprising persons whose duration of unemployment is above the median and the other, persons whose duration is below it.										
Not in the labour force	Persons who were not in the categories employed or unemployed, as defined. They include persons who were keeping house (unpaid), retired, voluntarily inactive, permanently unable to work, persons in institutions (hospitals, jails, sanatoriums, etc.), trainee teachers, members of contemplative religious orders and persons whose only activity during the reference week was jury service or unpaid voluntary work for a charitable organisation.										
Occupation	Classified according to the <i>Australian Standard Classification of Occupations, 1986</i> (1222.0).										
Participation rate	For any group, the labour force expressed as a percentage of the civilian population aged 15 years and over in the same group. Participation rates for persons classified by birthplace are calculated using population estimates which exclude those in institutions. Participation rates for persons classified by school or tertiary educational institution attendance are calculated using population estimates which include those in institutions.										
Part-time workers	Employed persons who usually worked less than 35 hours a week and who did so during the reference week.										
Seasonally adjusted series	A time series of estimates with the estimated effects of normal seasonal variation removed. See paragraph 23 of the Explanatory Notes for more detail.										
Statistical regions	Classified according to the <i>Australian Standard Geographical Classification, Edition 2.5</i> (1216.0).										
Status in employment	From August 1994, the labour force survey has adopted the international classification of Status in Employment, previously referred to as Status of Worker in the survey. This change follows recommendations of the 15th International Conference of Labour Statisticians and ABS standards. For the Labour Force Survey, the change involves no changes in definitions. The only changes are to the classification titles, as follows: <table border="0" style="margin-left: 40px;"> <tr> <td style="text-align: center;">Status of Worker</td> <td style="text-align: center;">Status in Employment</td> </tr> <tr> <td>Wage and salary earner</td> <td>Employee</td> </tr> <tr> <td>Employer</td> <td>Employer</td> </tr> <tr> <td>Self-employed</td> <td>Own account worker</td> </tr> <tr> <td>Unpaid family helper</td> <td>Contributing family worker</td> </tr> </table>	Status of Worker	Status in Employment	Wage and salary earner	Employee	Employer	Employer	Self-employed	Own account worker	Unpaid family helper	Contributing family worker
Status of Worker	Status in Employment										
Wage and salary earner	Employee										
Employer	Employer										
Self-employed	Own account worker										
Unpaid family helper	Contributing family worker										
Trend series	A smoothed seasonally adjusted series of estimates. See paragraphs 24 and 25 of the Explanatory Notes for more detail.										

Unemployed	<p>Persons aged 15 years and over who were not employed during the reference week and :</p> <p>(a) had actively looked for full-time or part-time work at any time in the 4 weeks up to the end of the reference week and:</p> <p>(i) were available for work in the reference week or would have been available except for temporary illness (i.e. lasting for less than 4 weeks to the end of the reference week);</p> <p>(ii) were waiting to start a new job within 4 weeks from the end of the reference week and would have started in the reference week if the job had been available then or</p> <p>(b) were waiting to be called back to a full-time or part-time job from which they had been stood down without pay for less than 4 weeks up to the end of the reference week (including the whole of the reference week) for reasons others than bad weather or plant breakdown.</p>
Unemployed persons classified by industry and occupation	<p>Unemployed persons who had worked full-time for 2 weeks or more in the last 2 years are classified according to the industry and occupation of their most recent full-time job.</p>
Unemployed looking for full-time work	<p>Unemployed persons who actively looked for full-time work or were to resume a full-time job, from which they had been stood down.</p>
Unemployed looking for part-time work	<p>Unemployed persons who had actively looked for part-time work only or were to resume a part-time job, from which they had been stood down.</p>
Unemployment rate	<p>For any group, the number of unemployed persons expressed as a percentage of the labour force in the same group.</p>



For more information . . .

The ABS publishes a wide range of statistics and other information on Australia's economic and social conditions. Details of what is available in various publications and other products can be found in the ABS Catalogue of Publications and Products available from all ABS Offices.

ABS Products and Services

Many standard products are available from ABS bookshops located in each State and Territory. In addition to these products, information tailored to the needs of clients can be obtained on a wide range of media by contacting your nearest ABS Office. The ABS also provides a Subscription Service for standard products and some tailored information services.

National Dial-a-Statistic Line

0055 86 400

Steadycom P/L: premium rate 25c/21.4 secs.

This number gives 24-hour access, 365 days a year, for a range of important economic statistics including the CPI.

Internet

<http://www.statistics.gov.au>

A wide range of ABS information is available via the Internet, with basic statistics available for each State, Territory and Australia. We also have Key National Indicators, ABS product release details and other information of general interest.

Sales and Inquiries

Keylink STAT.INFO/ABS
X.400 (C:Australia,PUB:Telememo,0:ABS,FN:STAT,SN:INFO)
Internet stat.info@abs.telememo.au

National Mail Order Service (06) 252 5249
Subscription Service 1800 02 0608

	Information Inquiries	Bookshop Sales
SYDNEY	(02) 268 4611	268 4620
MELBOURNE	(03) 9615 7755	9615 7755
BRISBANE	(07) 3222 6351	3222 6350
PERTH	(09) 360 5140	360 5307
ADELAIDE	(08) 237 7100	237 7582
HOBART	(002) 205 800	205 800
CANBERRA	(06) 252 6627	207 0326
DARWIN	(089) 432 111	432 111



Client Services, ABS, PO Box 10, Belconnen ACT 2616

Recommended retail price: \$15.00



2620130005966
ISSN 0313-1912